

# Map Catalogue 2024

British Antarctic Survey



**British  
Antarctic Survey**

NATURAL ENVIRONMENT RESEARCH COUNCIL

**POLAR SCIENCE**  
**FOR A SUSTAINABLE PLANET**

The British Antarctic Survey has a selection of maps for sale ranging from overview maps of Antarctica, the Arctic and Antarctic Peninsula through to more detailed maps of regions of specific interest.

## Contents

### Page

#### TOPOGRAPHIC MAPS

- 3** BAS Miscellaneous (Misc) Series
- 6** BAS Topographic Series
- 8** BAS 250P Series
- 9** BAS 250 Series
- 11** BAS 100 Series
- 12** South Georgia
- 15** Maps with UK Antarctic Heritage Trust

#### THEMATIC MAPS

- 17** BAS Thematic Map Series
- 19** BAS GEOMAP2 Series
- 23** BAS GEOMAP Series
- 26** South Georgia
  
- 27** Books
  
- 28** Contact details
- 28** Feedback and further information
  
- 29** Catalogue summary



**British  
Antarctic Survey**

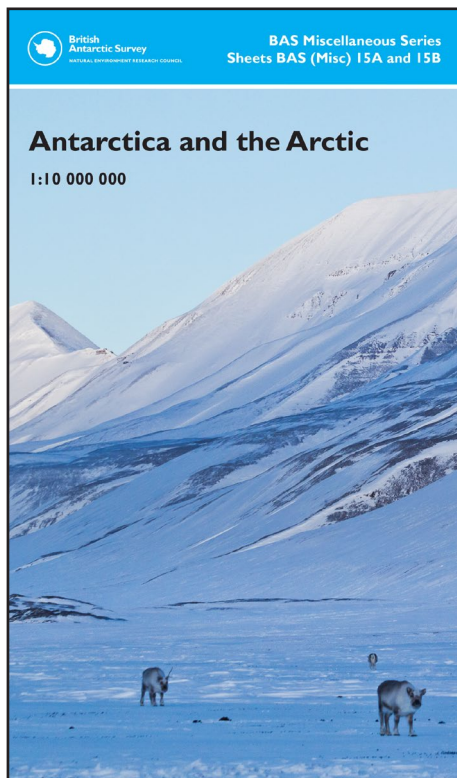
NATURAL ENVIRONMENT RESEARCH COUNCIL

**Cover:** GPS surveying of Edgell Spur, Palmer Land, Antarctica (January 2009).

**i** For more information, please visit our website: [bas.ac.uk](http://bas.ac.uk)



## Topographic maps



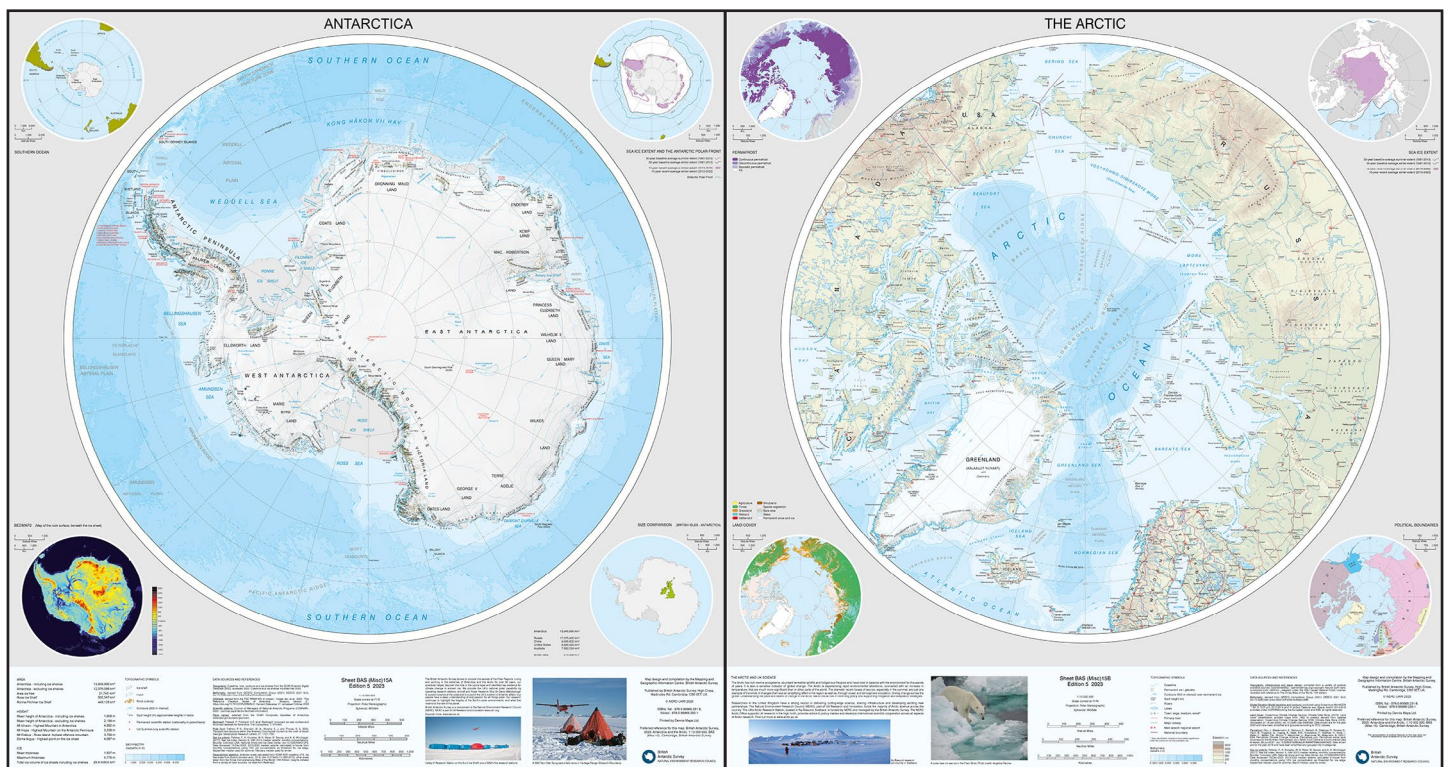
### BAS (Misc) 15A and 15B: Antarctica and the Arctic 1:10 000 000, 2023

This double-sided topographic map provides an overview, and comparison, of both polar regions at the same scale and with the same geographical extent.

**Side A:** Antarctica. A topographic map of Antarctica, including: Coastline and ice shelves; bathymetry; ice/rock limits; contours, key mountain summits and hill-shaded terrain, and scientific research stations.

**Side B:** The Arctic. A topographic map of the Arctic, including: Coastline; bathymetry; contours, key mountain summits and hill-shaded terrain, major rivers and lakes, and glaciers and ice caps. It also shows major towns, transport networks, airports and national boundaries.

| BAS (Misc) 15A and 15B: Antarctica and the Arctic |                              |
|---------------------------------------------------|------------------------------|
| Size                                              | 89 x 84 cm                   |
| Size folded                                       | 22.5 x 13.5 cm               |
| Format                                            | Double-sided, flat or folded |
| ISBN folded                                       | 978-0-85665-230-1            |
| ISBN flat                                         | 978-0-85665-231-8            |
| RRP                                               | £11.99                       |



Above: BAS (Misc) 15A and 15B: Antarctica and the Arctic (both sides)

Topographic maps

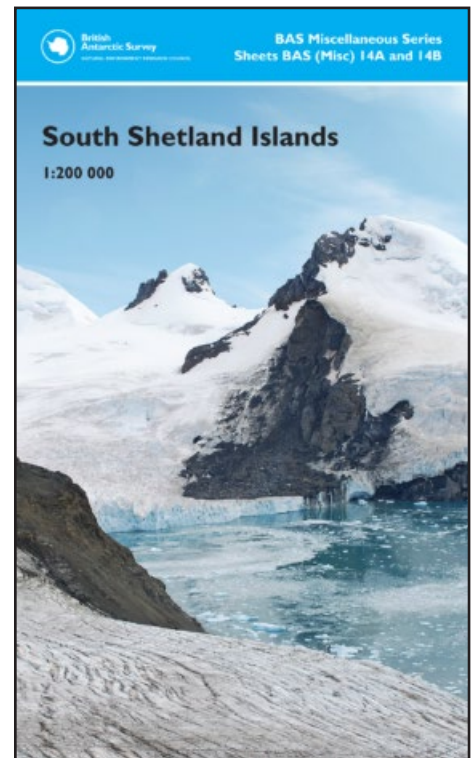
**BAS (Misc) 14A and 14B: South Shetland Islands**

1:200 000, 2019

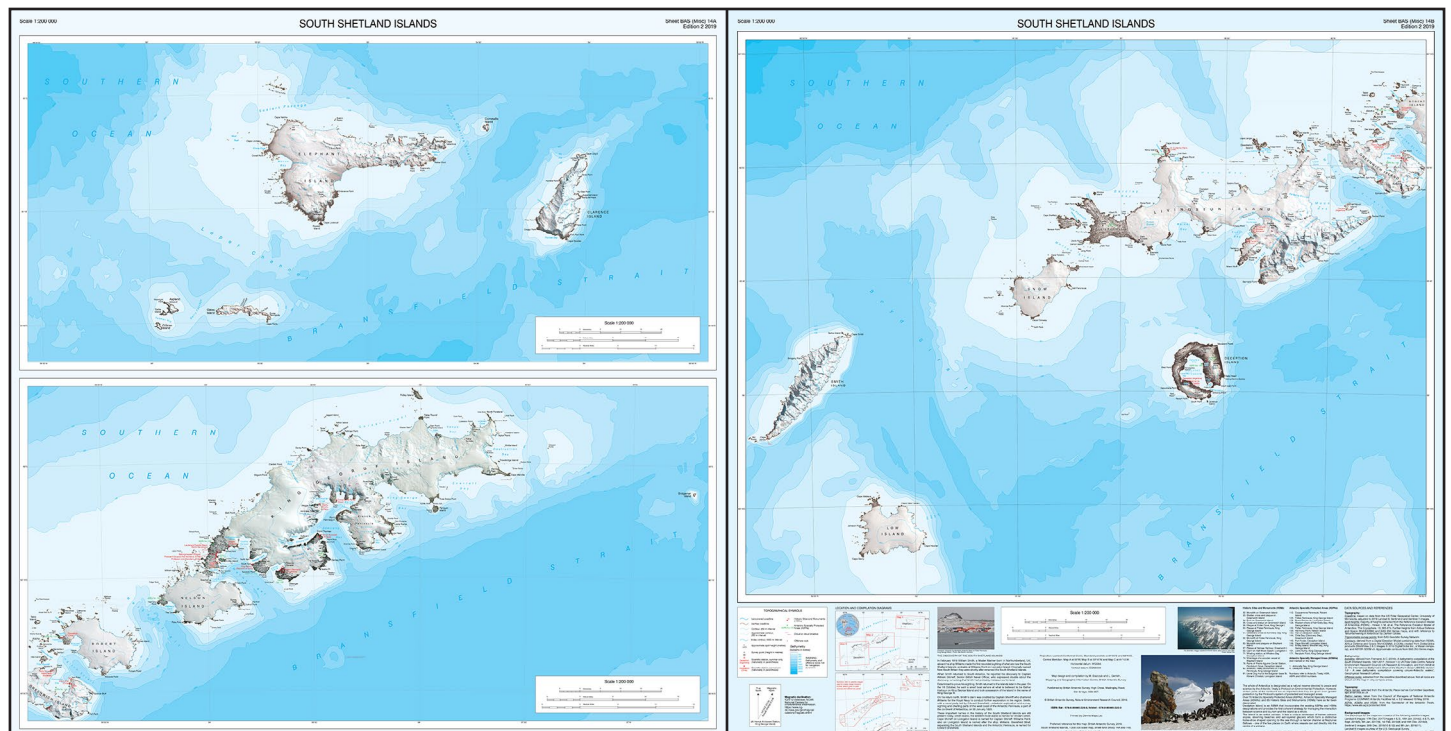
This double-sided map features topographic detail with a Landsat 8 and Sentinel-2 satellite image mosaic backdrop. It covers the South Shetland Islands in three separate map panels. The map shows topographic information including: Coastline and offshore rocks; bathymetry; elevation information as contours and selected mountain summit heights; all UK place names; permanent and summer-only scientific research stations; Antarctic Specially Protected Areas and Historic Sites and Monuments.

**Side A:** Map 1: Clarence, Elephant, Aspland and Gibbs islands. Map 2: King George, Nelson and Robert islands.

**Side B:** Map 3: Greenwich, Livingston, Deception, Snow, Low and Smith islands.



| BAS (Misc) 14A and 14B: South Shetland Islands |                              |
|------------------------------------------------|------------------------------|
| Size                                           | 89 x 87.5 cm                 |
| Size folded                                    | 22.5 x 13.5 cm               |
| Format                                         | Double-sided, flat or folded |
| ISBN folded                                    | 978-0-85665-223-3            |
| ISBN flat                                      | 978-0-85665-224-0            |
| RRP                                            | £11.99                       |



Above: BAS (Misc) 14A and 14B: South Shetland Islands (both sides).



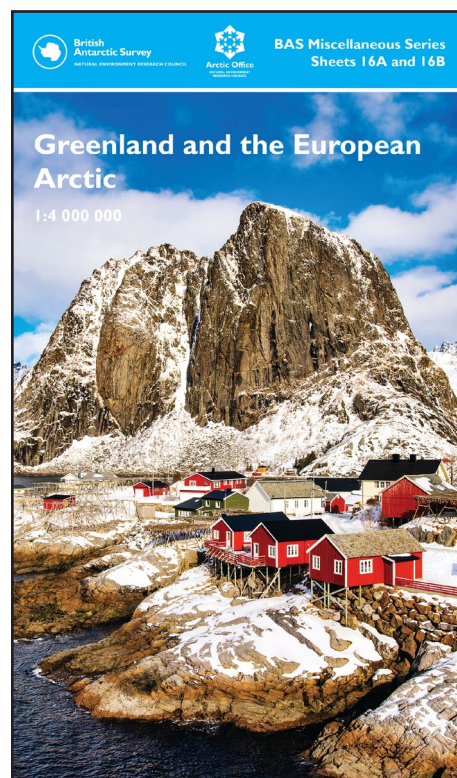
## Topographic maps

### BAS (Misc) 16A and 16B: Greenland and the European Arctic 1:4 000 000, 2019

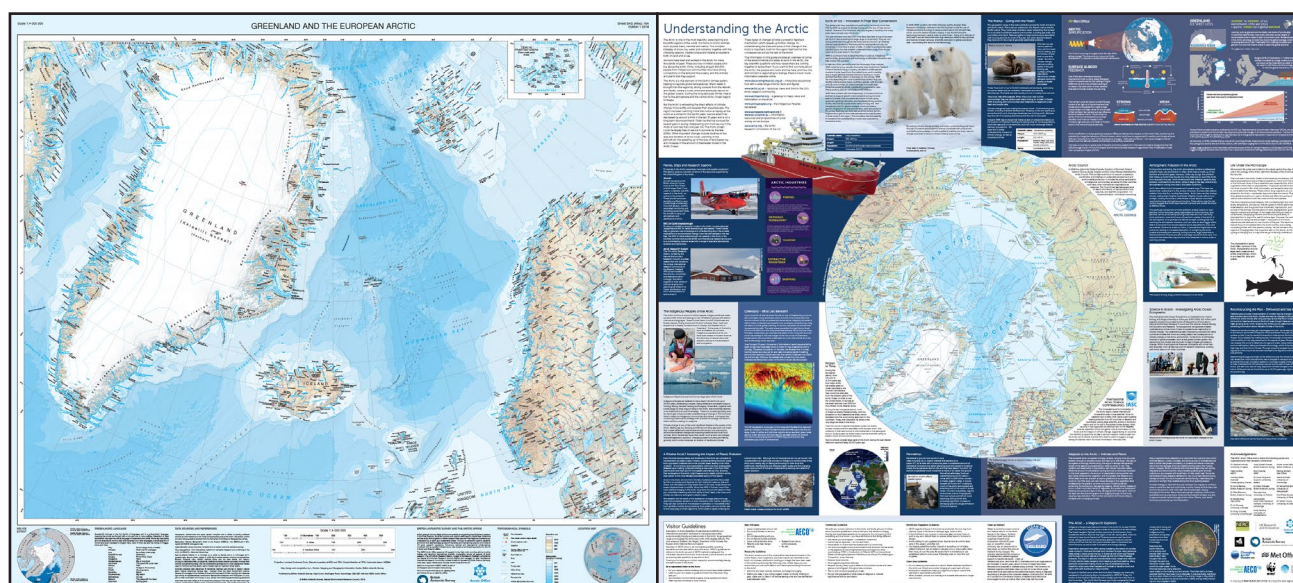
This new map is at 1:4,000,000 scale covering a region not previously covered on one map sheet. There is a large information sheet on the reverse with topical information about the Arctic, produced by the UK Natural Environment Research Council Arctic Office. The map and information sheet will be an excellent resource for tour visitors, scientists and all with an interest in the Arctic. It is printed on high-quality paper by map printers Dennis Maps as a large format, double-sided sheet.

**Side A:** The map covers the eastern Canadian Arctic, Greenland, Iceland, northern Scotland, Svalbard, Scandinavia, Finland, and the western edge of the Russian Arctic, including Franz Josef Land. Features including glaciers, bays, islands and lakes are named, and the extent of permanent ice is shown. The map includes minimum and maximum sea ice extents for the region and also for the whole Arctic in a small inset map. Major towns, places commonly visited by tour ships and scientific research stations are shown on the map.

**Side B:** The reverse side features a vibrant information panel covering many aspects of Arctic life. Topics such as polar bear conservation, indigenous people and Arctic warming are covered, with contributions from organisations including the UK Met Office and The World Wide Fund for Nature (WWF).

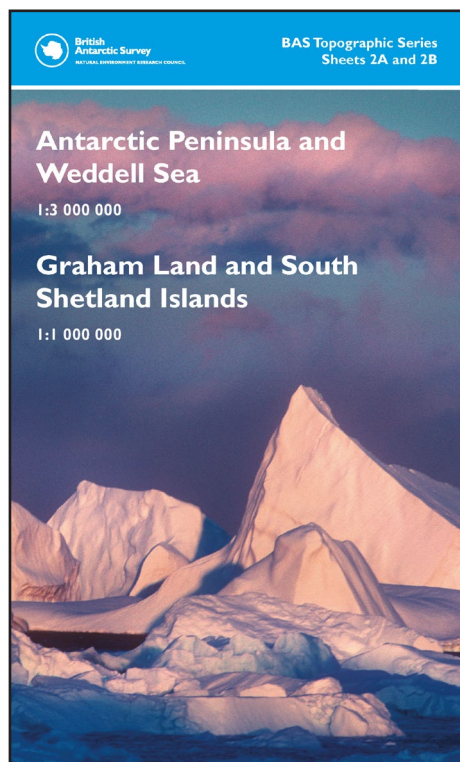


| BAS (Misc) 16A and 16B: Greenland and The European Arctic |                              |
|-----------------------------------------------------------|------------------------------|
| Size                                                      | 100 x 89 cm                  |
| Size folded                                               | 22.5 x 13.5 cm               |
| Format                                                    | Double-sided, flat or folded |
| ISBN folded                                               | 978-0-85665-221-9            |
| ISBN flat                                                 | 978-0-85665-222-6            |
| RRP                                                       | £11.99                       |



Above: BAS (Misc) 16A and 16B: Greenland and the European Arctic.

## Topographic maps



### BAS Topo 2A and 2B: Antarctic Peninsula and Weddell Sea / Graham Land and South Shetland Islands

1:3 000 000 / 1: 1 000 000, 2024

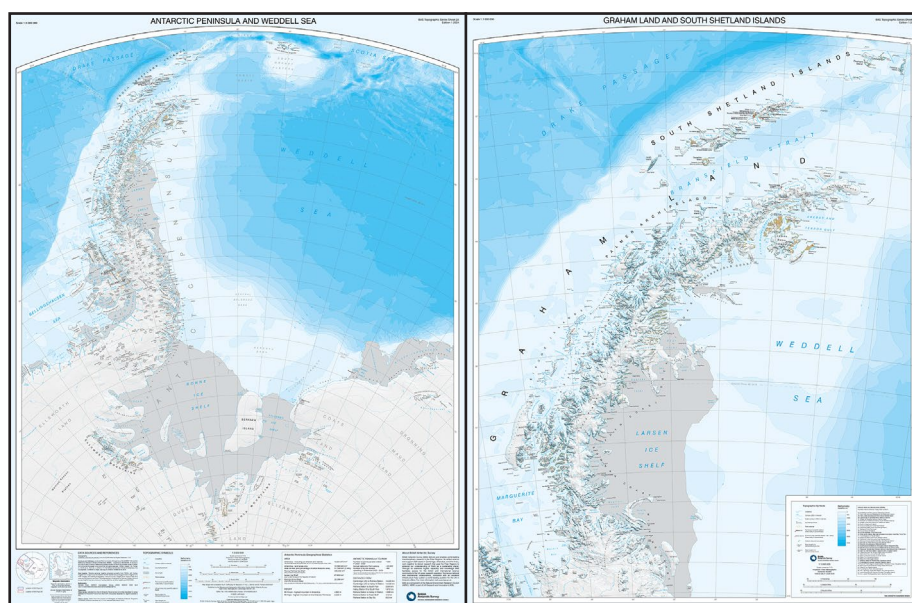
This double-sided map provides a regional overview of the Antarctic Peninsula and Weddell Sea area on side A with more detailed coverage of the northern Antarctic Peninsula region on side B.

**Side A:** 1: 3 000 000 scale. This map covers the South Orkney and South Shetland islands, Antarctic Peninsula, Ellsworth Mountains, Weddell Sea, Pensacola Mountains, Shackleton Range and Brunt Ice Shelf. It shows topographic details including: Coastline; ice shelves; rock exposure; contours, selected mountain summit heights and hill-shaded terrain; major place names; permanent Scientific Research Stations and bathymetry. There is also a fact box with geographical information about Antarctica such as areas of major features and highest mountains.

**Side B:** 1: 1 000 000 scale. This map covers the South Shetland Islands and the Antarctic Peninsula as far south as Marguerite Bay at 68°30'S. It shows topographic features in more detail than side A; more comprehensive place names; permanent and summer-only Scientific Research Stations and Historic Sites and Monuments.

#### BAS Topo 2A and 2B: Antarctic Peninsula and Weddell Sea / Graham Land and South Shetland Islands

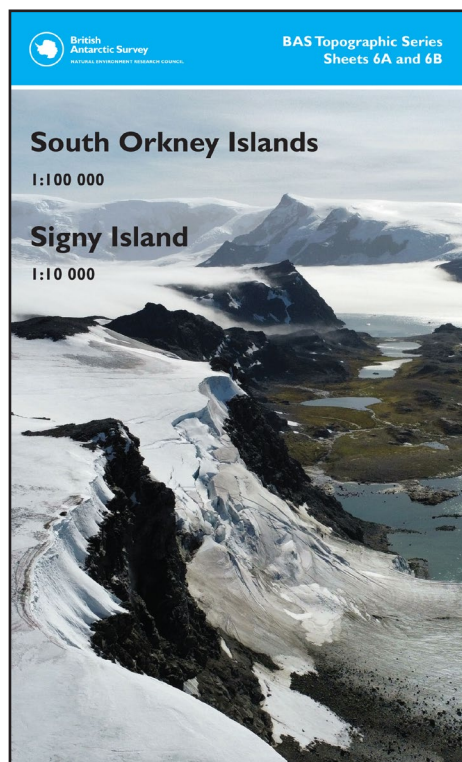
|             |                              |
|-------------|------------------------------|
| Size        | 110 x 84 cm                  |
| Size folded | 22.5 x 13.5 cm               |
| Format      | Double-sided, flat or folded |
| ISBN folded | 978-0-85665-232-5            |
| ISBN flat   | 978-0-85665-233-2            |
| RRP         | £11.99                       |



Above: Both sides of BAS Topo 2.



Topographic maps



**BAS Topo 6A and 6B: South Orkney Islands and Signy Island**  
**1:100 000 / 1:10 000, 2024**

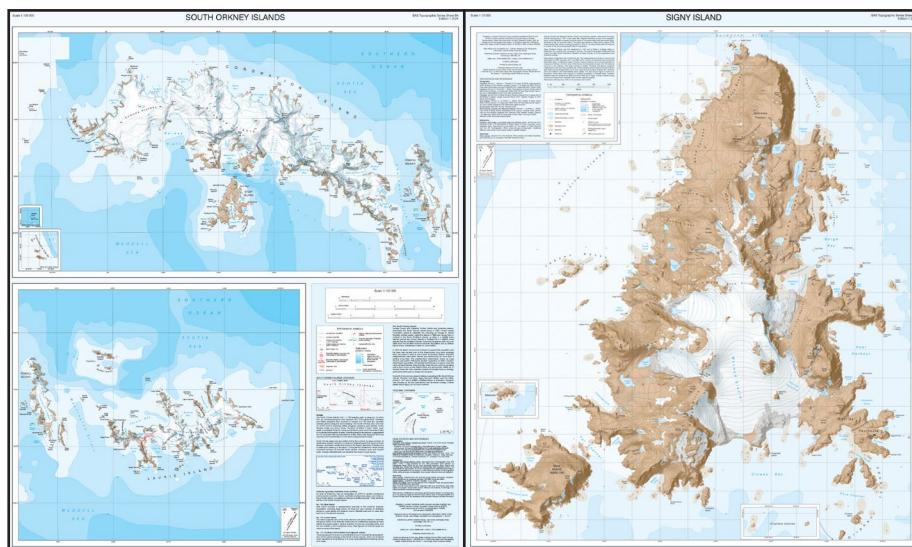
This map was produced in 2024 and contains new and updated data for all of the South Orkney Islands on one side and a detailed map of Signy Island on the reverse. The maps feature topographic details including rock, moraine and ice boundaries, the location of lakes, bathymetry, contours and spot heights. The terrain is indicated with hillshading from a new elevation model (REMAv2), highlighting the mountainous ridges along the centre of the islands.

**Side A:** 1:100 000 scale map of the South Orkney Islands including Inaccessible Islands, Coronation Island, Powell Island and Laurie Island. The map shows the location of research stations, Antarctic Specially Protected Areas (ASPAs) and Important Bird Areas (IBAs). Place names from the UK Antarctic Place-names Committee gazetteer are shown on the map.

**Side B:** 1:10 000 scale map of Signy Island and surrounding islands and rocks. Displaying topographic data in more detail than side A, this map shows the diverse and isolated island of Signy, one of the South Orkney Islands. Signy Research Station is located on the map, alongside huts present around the island. Bathymetry and offshore rocks from hydrographic charts are shown on the map, as well as shallow, shoal areas.

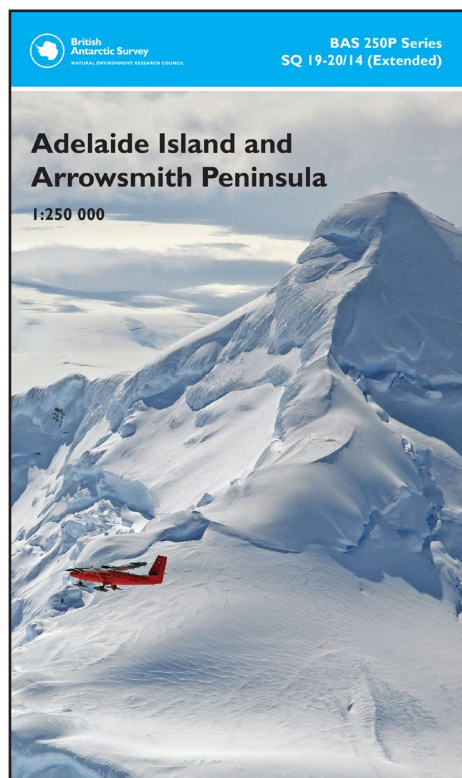
**BAS Topo 6A and 6B: South Orkney Islands/Signy Island**  
**1:100 000 / 1:10 000**

|             |                              |
|-------------|------------------------------|
| Size        | 89 x 75 cm                   |
| Size folded | 22.5 x 13.5 cm               |
| Format      | Double-sided, flat or folded |
| ISBN folded | 978-0-85665-237-0            |
| ISBN flat   | 978-0-85665-238-7            |
| RRP         | £11.99                       |



**Above:** BAS Topo 6A and 6B: South Orkney Islands and Signy Island.

Topographic and satellite image maps



**BAS 250P Series: SQ 19-20/14 Adelaide Island and Arrowsmith Peninsula**

1:250 000, 2017

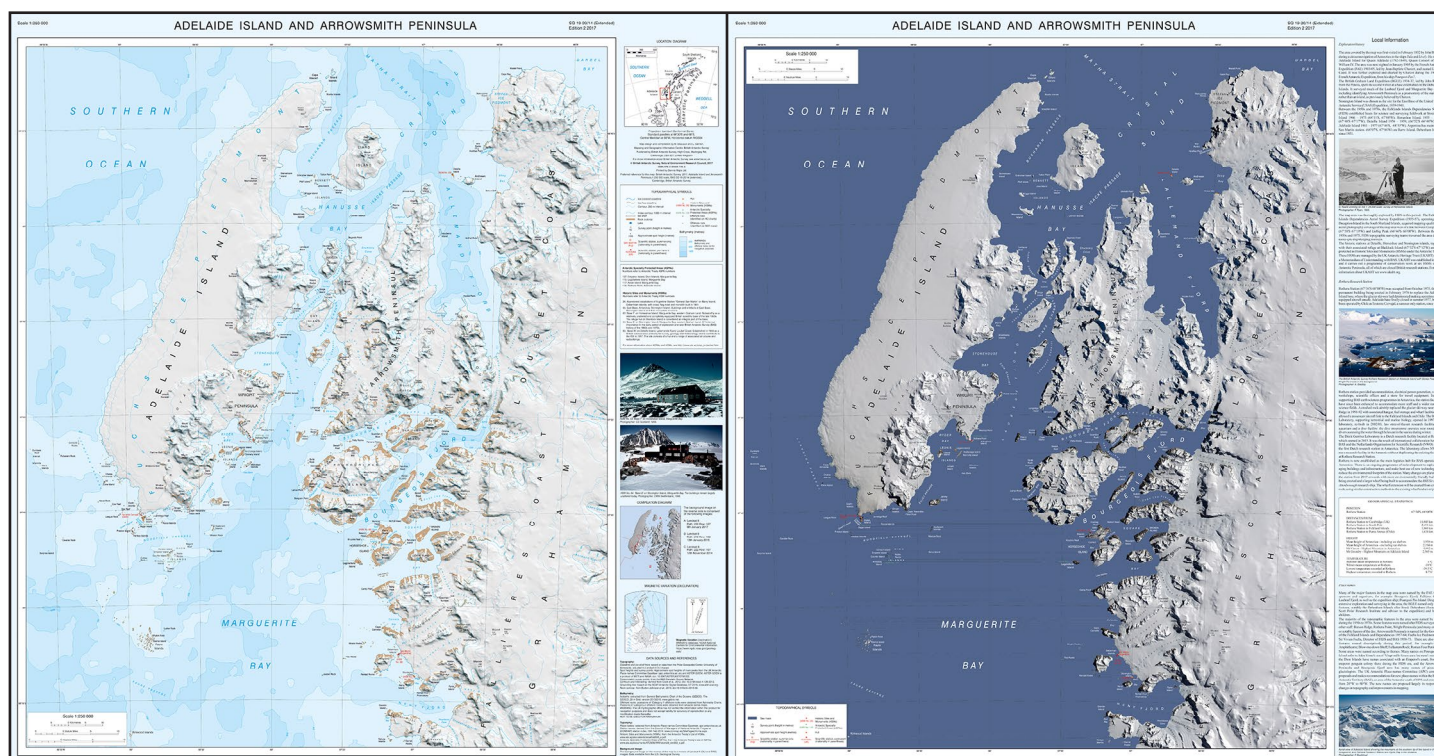
This double-sided map features both a topographic and a satellite image map. Its area coverage includes Rothera Research Station (UK), San Martin Station (Argentina) and Teniente Luis Carvajal Station (Chile), as well as previous UK bases, now historic sites, at Detaille Island, Horseshoe Island and Stonington Island.

**Side A:** Shows topographic information including: Coastline; rock exposure; elevation information as contours and selected mountain summit heights; all UK place names; scientific research stations; Historic Sites and Monuments (HSMs) and Antarctic Specially Protected Areas (ASPAs).

**Side B:** Shows a Landsat 8 satellite image mosaic of the area with coastline and selected place names, and includes historical notes about the exploration of the area.

**BAS 250P Series: SQ 19-20/14 Adelaide Island and Arrowsmith Peninsula**

|             |                              |
|-------------|------------------------------|
| Size        | 88 x 84 cm                   |
| Size folded | 22.5 x 13.5 cm               |
| Format      | Double-sided, flat or folded |
| ISBN folded | 978-0-85665-195-3            |
| ISBN flat   | 978-0-85665-198-4            |
| RRP         | £11.99                       |



Above: Extracts from SQ19-20/14: Adelaide Island and Arrowsmith Peninsula (Sides A and B).



Topographic maps

**BAS 250 Series: 1:250 000**

A series of beautiful contoured maps produced in the 1970s. Compiled from vertical and oblique aerial photography. Relief is shown by contours, enhanced by hill shading; printed in six colours.

**SP 21-22/13: Trinity Peninsula**

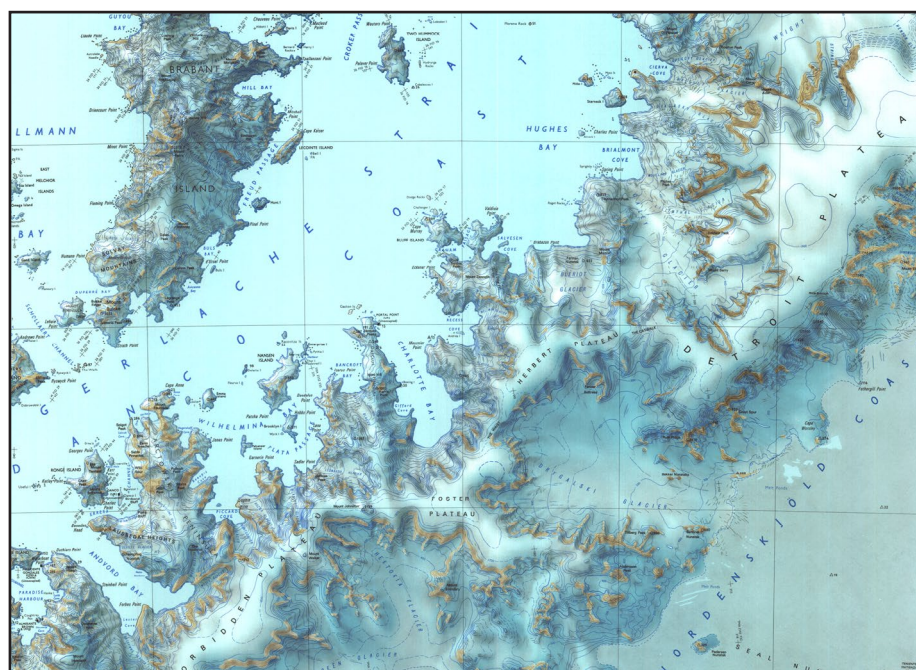
1974, reprinted in 1986

| SP 21-22/13: Trinity Peninsula |                   |
|--------------------------------|-------------------|
| Size                           | 69.5 x 69 cm      |
| Format                         | Flat              |
| ISBN                           | 978-0-85665-179-3 |
| RRP                            | £6.99             |

**SP 21-22/14: Joinville Island**

1973, reprinted in 1986

| SP 21-22/14: Joinville Island |                   |
|-------------------------------|-------------------|
| Size                          | 76 x 69 cm        |
| Format                        | Flat              |
| ISBN                          | 978-0-85665-180-9 |
| RRP                           | £6.99             |



Above: Extract from map SQ19-20/4: Graham Land.

Topographic maps

**SQ 19-20/4: Graham Land**

1974, reprinted in 1986

|        | <b>SQ 19-20/4: Graham Land</b> |
|--------|--------------------------------|
| Size   | 81 x 68.5 cm                   |
| Format | Flat                           |
| ISBN   | 978-0-85665-181-6              |
| RRP    | £6.99                          |

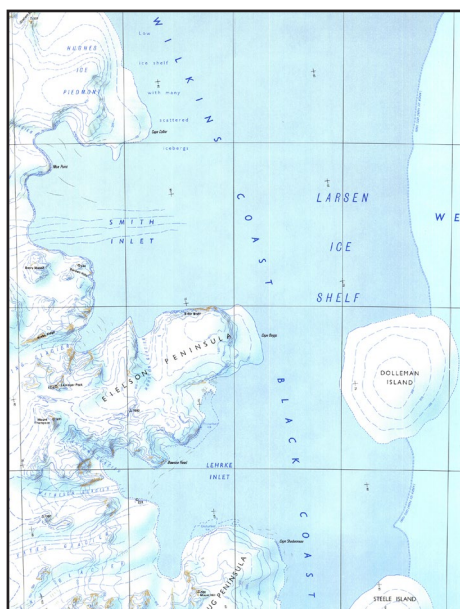
**SQ 21-22/1: James Ross Island**

1974, reprinted in 1986

|        | <b>SQ 21-22/1: James Ross Island</b> |
|--------|--------------------------------------|
| Size   | 79 x 71 cm                           |
| Format | Flat                                 |
| ISBN   | 978-0-85665-182-3                    |
| RRP    | £6.99                                |

**SR 19-20/16: Palmer Land**

1976



Above: Extract of SR 19-20/12: Palmer Land.

**SR 19-20/12: Palmer Land**

1976

|        | <b>SR 19-20/12: Palmer Land</b> |
|--------|---------------------------------|
| Size   | 71 x 52.5 cm                    |
| Format | Flat                            |
| ISBN   | 978-0-85665-184-7               |
| RRP    | £6.99                           |



## Topographic maps

### BAS 100 Series: 1:100 000

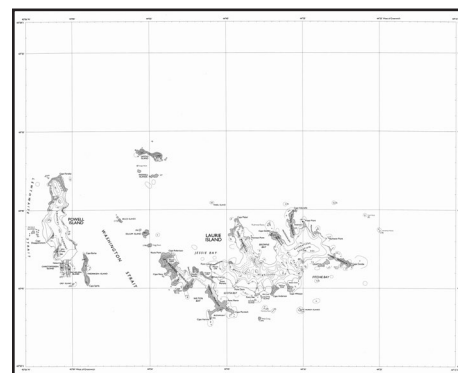
A series of maps providing medium-scale coverage of specific areas of interest.

#### Sheet 1: South Orkney Islands, East Sheet

1:100 000, 1988

Provisional compilation from various reconnaissance surveys (1903–1965), modified using detail from Landsat MSS satellite imagery and miscellaneous photographs; printed in black.

| Sheet 1: South Orkney Islands, East Sheet |                   |
|-------------------------------------------|-------------------|
| Size                                      | 64 x 56.5 cm      |
| Format                                    | Flat              |
| ISBN                                      | 978-0-85665-187-8 |
| RRP                                       | £3.99             |



#### Sheet 2: James Ross Island

1:100 000, 1995

A full-colour contoured map of James Ross Island, Snow Hill Island and Seymour Island. Compiled from vertical aerial photography and satellite imagery.

| Sheet 2: James Ross Island |                   |
|----------------------------|-------------------|
| Size                       | 113.5 x 105 cm    |
| Size folded                | 28.5 x 20 cm      |
| Format                     | Folded            |
| ISBN                       | 978-0-85665-186-1 |
| RRP                        | £6.99             |



## Topographic maps

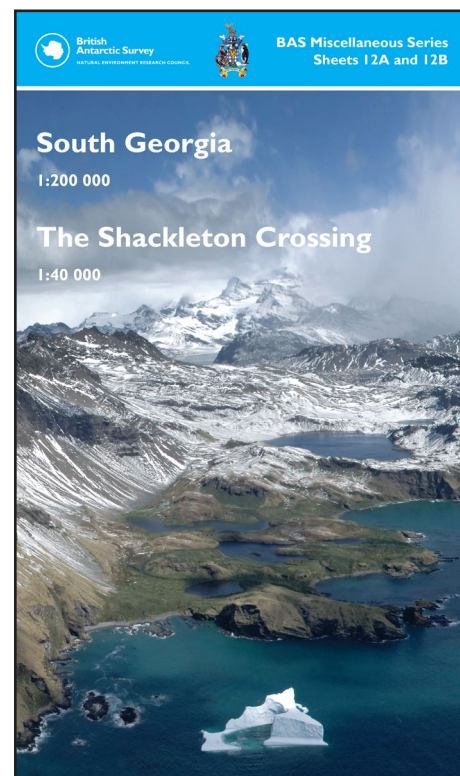
### BAS (Misc) 12A and 12B: South Georgia and The Shackleton Crossing

1:200 000/1:40 000, 2021

This double-sided map features South Georgia on one side and The Shackleton Crossing route on the reverse. It includes the locations of abandoned whaling stations and background notes about South Georgia and its history, and a brief summary of Shackleton's crossing.

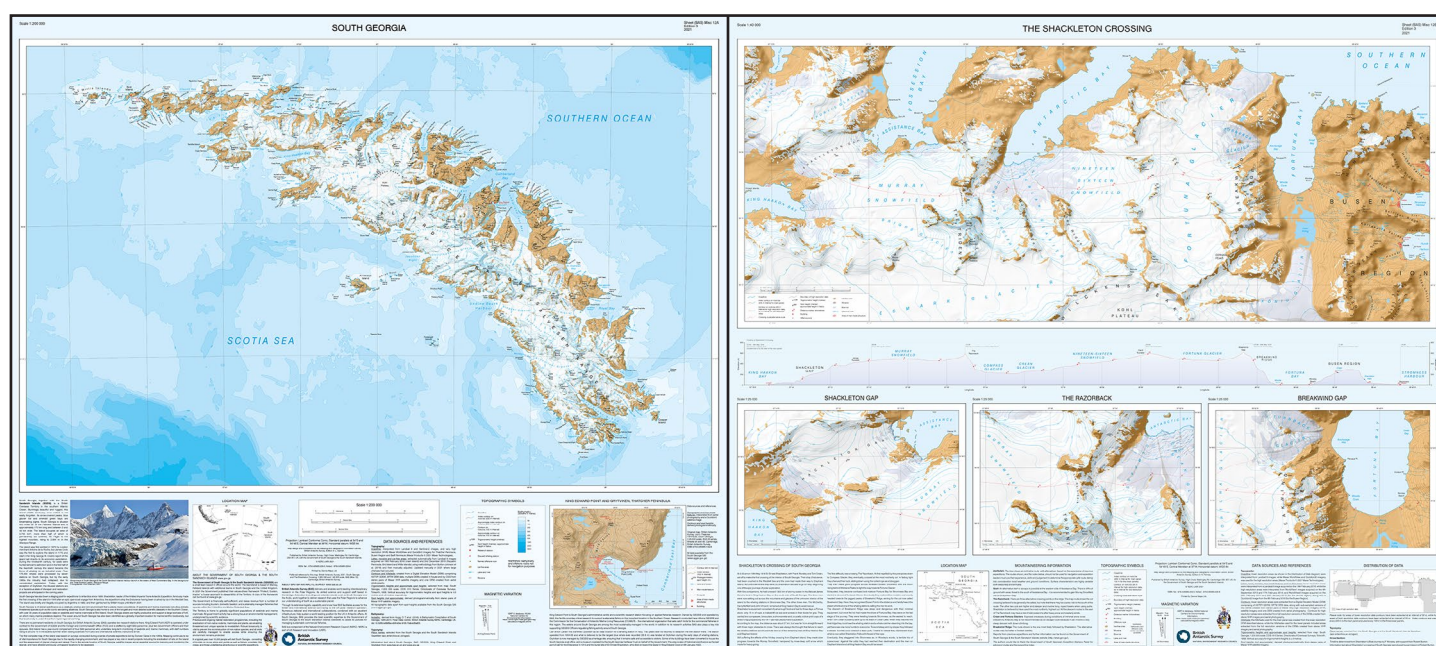
Side A: Shows topographic information including: coastline and offshore rocks; bathymetry; rock exposure and moraine; elevation information such as contours and selected mountain summit heights; place names; scientific research stations and abandoned whaling stations.

Side B: Covers the route which Sir Ernest Shackleton took on the first crossing of South Georgia in 1916 and which is followed by many intrepid explorers today. This 1:40 000 scale map has detailed topographic data created from vhr satellite imagery, with 1:25 000 scale insets of key areas. A cross section of the route is also shown.



### BAS (Misc) 12A and 12B: South Georgia and The Shackleton Crossing

|             |                              |
|-------------|------------------------------|
| Size        | 100 x 89 cm                  |
| Size folded | 22.5 x 13.5 cm               |
| Format      | Double-sided, flat or folded |
| ISBN folded | 978-0-85665-228-8            |
| ISBN flat   | 978-0-85665-229-5            |
| RRP         | £11.99                       |



Above: BAS(Misc) 12A showing the whole island of South Georgia, and 12B detailing the Shackleton crossing region.




Topographic maps


BRITISH ANTARCTIC SURVEY  
Series BAS 25 Sheets 4A and 4B

**THATCHER PENINSULA**  
SOUTH GEORGIA

Scale 1:25 000



King Edward Cove, Thatcher Peninsula (P. Bucktrout, BAS)



CAMBRIDGE, UK 2010

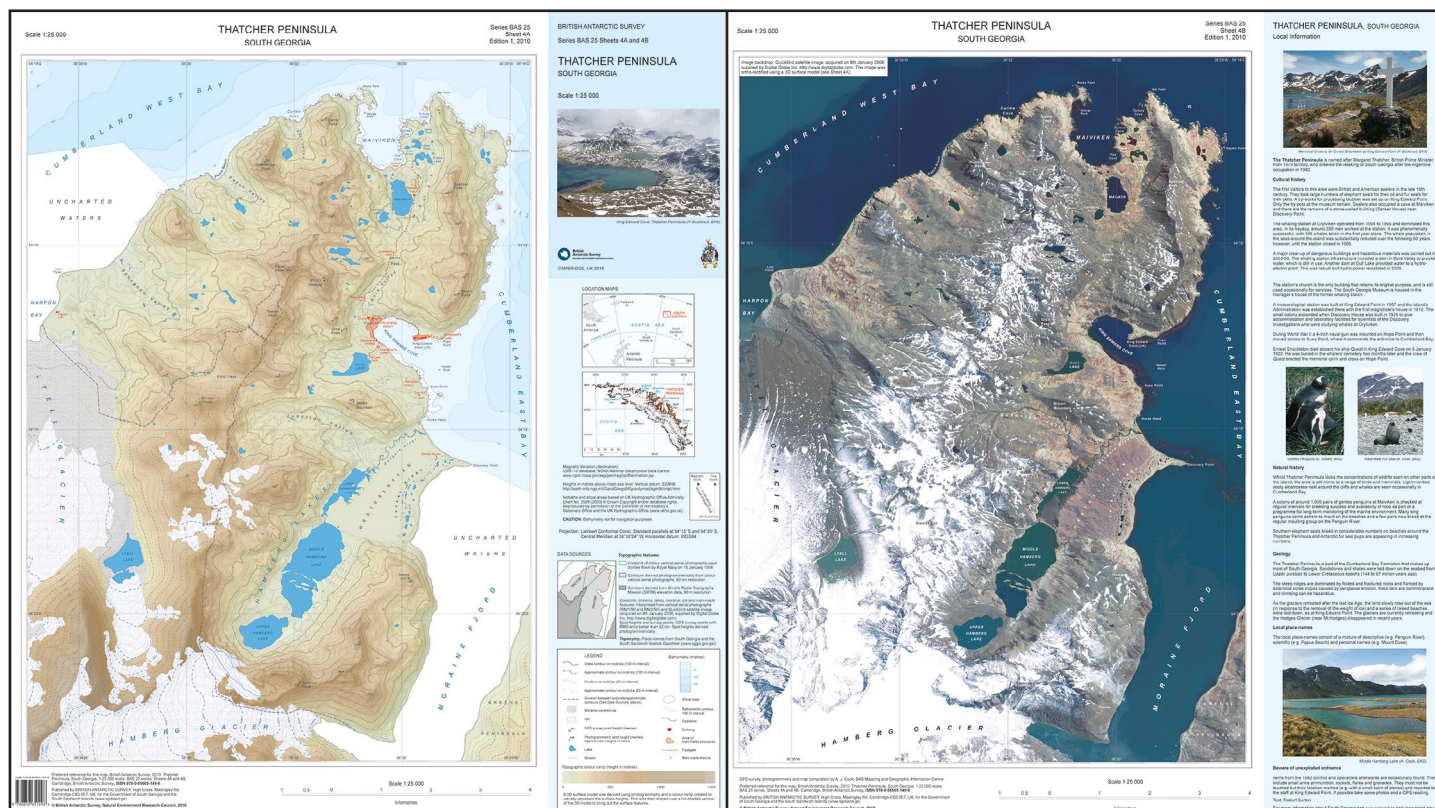
**BAS 25 Series Sheets 4A and 4B: Thatcher Peninsula, South Georgia**

1:25 000, 2010

This double-sided map features both a topographic and a satellite image map of Thatcher Peninsula, South Georgia. The topographic map includes contours at 25m intervals, moraine, ice, rivers and lakes. The map covers King Edward Point, the BAS research station, and the abandoned whaling station at Grytviken. Side B shows a VHR satellite image of the peninsula, with selected place names. Local information about cultural and natural history is also provided.

**BAS 25 Series Sheets 4A and 4B: Thatcher Peninsula, South Georgia**

|             |                              |
|-------------|------------------------------|
| Size        | 65 x 58 cm                   |
| Size folded | 21.7 x 14.5 cm               |
| Format      | Double-sided, flat or folded |
| ISBN folded | 978-0-85665-149-6            |
| ISBN flat   | 978-0-85665-217-2            |
| RRP         | £9.99                        |



The image displays the front and back covers of the 'BAS 25 Series Sheets 4A and 4B: Thatcher Peninsula, South Georgia' map. The left cover features a topographic map with contour lines, a legend, and a title block. The right cover features a satellite image of the peninsula, a title block, and a section of local information including photos and text about the area's history and geography.

Above: BAS 25 Series Sheets 4A and 4B, Thatcher Peninsula, South Georgia.



Topographic maps

**BAS 25 Series Sheets 5A and 5B: Busen Region, South Georgia**

1:25 000, 2013

This double-sided map features a topographic map of the Busen Region on side A and information about the history and environment of the area on side B. Side A shows contours at 25m intervals and the locations of ice, rivers and lakes. Man-made features are also shown at the disused whaling stations of Leith, Stromness and Husvik. Side B presents information about topics including The Shackleton Crossing, local climate and geology, and the glacial history and geomorphology.


**BAS 25 Series Sheets 5A and 5B: Busen Region, South Georgia**

|             |                              |
|-------------|------------------------------|
| Size        | 88 x 69 cm                   |
| Size folded | 23 x 14.5 cm                 |
| Format      | Double-sided, flat or folded |
| ISBN folded | 978-0-85665-169-4            |
| ISBN flat   | 978-0-85665-218-9            |
| RRP         | £9.99                        |


BRITISH ANTARCTIC SURVEY  
Series BAS 25 Sheets 5A and 5B


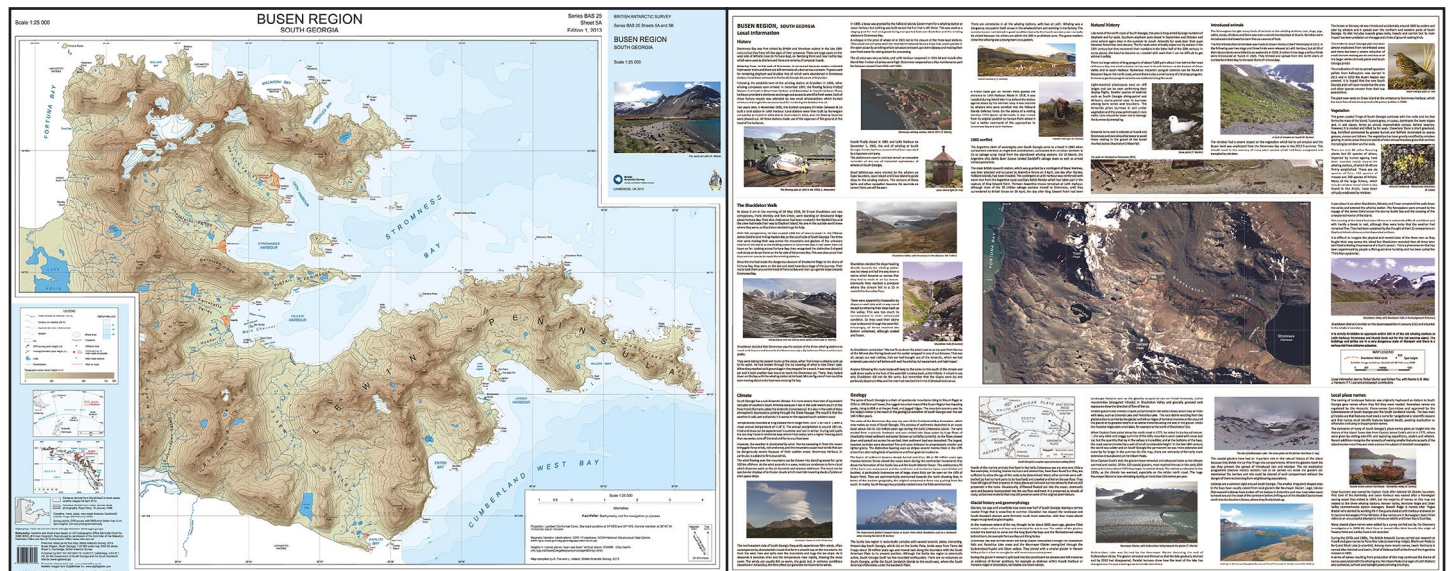
**BUSEN REGION**  
SOUTH GEORGIA

Scale 1:25 000



*Fur seals at Leith (A. Black)*

 British Antarctic Survey  
NATURAL ENVIRONMENT RESEARCH COUNCIL  
CAMBRIDGE, UK 2013

Above: BAS 25 Series Sheets 5A and 5B: Busen Region, South Georgia.



## Topographic maps

The British Antarctic Survey has collaborated with the UK Antarctic Heritage Trust to publish the following maps. These are only for sale via UKAHT.

### Contact

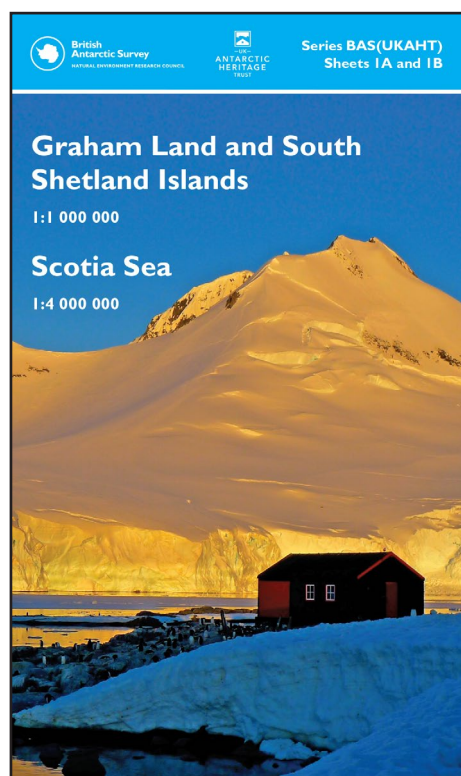
UK Antarctic Heritage Trust

High Cross, Madingley Road, Cambridge, CB3 0ET, UK

Tel: +44 (0)1223 355049

Email: [info@ukaht.org](mailto:info@ukaht.org)

[www.ukaht.org](http://www.ukaht.org)



### BAS (UKAHT) Sheet I: Graham Land and the South Shetland Islands / Scotia Sea

1:10 000 000 / 1:4 000 000, 2017

This double-sided map provides an overview of the northern Antarctic Peninsula area on side A, with a regional-scale map covering the Scotia Sea region on side B. It is an ideal companion for a voyage from South America or the Falkland Islands to South Georgia or the Antarctic Peninsula.

**Side A:** 1:1 000 000 scale. This map covers the South Shetland Islands and the Antarctic Peninsula as far south as Marguerite Bay at 68°30'S. It shows topographic features such as: Coastline; ice shelves; rock exposure; contours; selected mountain summit heights; hill-shaded terrain; bathymetry, and major place names; permanent and summer-only Scientific Research Stations and Historic Sites and Monuments.

**Side B:** 1:4 000 000 scale. This map covers the Scotia Sea region including: Argentina and Chile south of 50°S (including Ushuaia and Punta Arenas); the Falkland Islands; South Georgia; South Sandwich Islands; South Orkney Islands and the northern Antarctic Peninsula.

#### BAS (UKAHT) Sheet I: Graham Land and the South Shetland Islands / Scotia Sea

|             |                              |
|-------------|------------------------------|
| Size        | 90 x 84 cm                   |
| Size folded | 22.5 x 13.5 cm               |
| Format      | Double-sided, flat or folded |
| ISBN folded | 978-0-85665-210-3            |
| ISBN flat   | 978-0-85665-211-0            |
| RRP         | £11.99                       |

## Topographic maps

### BAS (UKAHT) Sheet 2: Brabant Island to Adelaide Island

1:250 000, 2017

The map covers the area of the west coast of the Antarctic Peninsula between Brabant Island and Adelaide Island, including: Gerlache Strait; Lemaire Channel; Palmer Station; Vernadsky Station; Grandidier Channel; Crystal Sound and Port Lockroy Historic Site. It also covers part of the east coast including Exasperation Inlet and Crane Glacier. Side A covers from Brabant Island to Argentine Island and side B covers Argentine Island to Adelaide Island. It connects to map BAS/UKAHT 3 to give full coverage of the northern Antarctic Peninsula north of Adelaide Island.

The map shows topographic detail with a Landsat 8 satellite image mosaic backdrop. It includes coastline; elevation information as contours and selected mountain summit heights; UK place names; scientific research stations; Historic Sites and Monuments (HSMs) and Antarctic Specially Protected Areas (ASPAs).

#### BAS (UKAHT) Sheet 2: Brabant Island to Adelaide Island

|             |                              |
|-------------|------------------------------|
| Size        | 88 x 84 cm                   |
| Size folded | 22.5 x 13.5 cm               |
| Format      | Double-sided, flat or folded |
| ISBN folded | 978-0-85665-194-6            |
| ISBN flat   | 978-0-85665-197-7            |
| RRP         | £11.99                       |



### BAS (UKAHT) Sheet 3: Northern Antarctic Peninsula

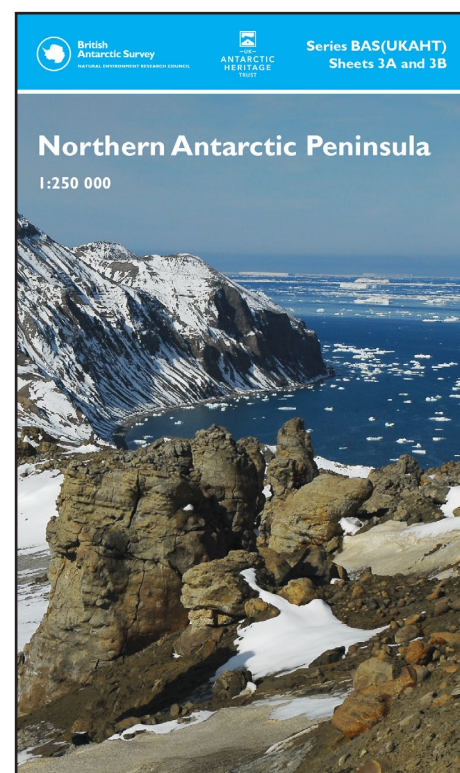
1:250 000, 2017

This double-sided map provides an overview of the northern part of the Antarctic Peninsula. It covers the area between Joinville Island and Hughes Bay, including James Ross and Snow Hill islands and the northern limit of the Larsen Ice Shelf on the east coast. It connects to map BAS/UKAHT 2 to give full coverage of the northern Antarctic Peninsula as far south as Adelaide Island.

The two maps show topographic detail with a Landsat 8 satellite image mosaic backdrop. The maps include: Coastline; elevation information as contours and selected mountain summit heights; UK place names; scientific research stations; Historic Sites and Monuments (HSMs) and Antarctic Specially Protected Areas (ASPAs).

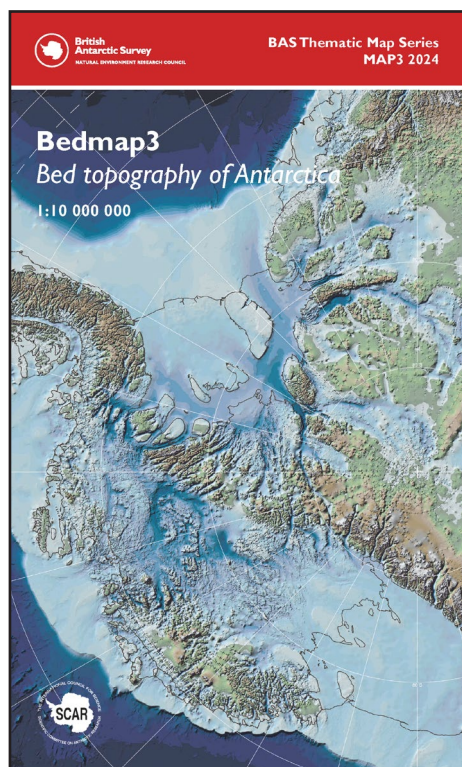
#### BAS (UKAHT) Sheet 3: Northern Antarctic Peninsula

|             |                              |
|-------------|------------------------------|
| Size        | 89 x 75 cm                   |
| Size folded | 22.5 x 13.5 cm               |
| Format      | Double-sided, flat or folded |
| ISBN folded | 978-0-85665-212-7            |
| ISBN flat   | 978-0-85665-213-4            |
| RRP         | £11.99                       |





Thematic maps



**BAS Thematic Map Series Sheet 3: Bedmap 3 – Bed Topography of Antarctica**

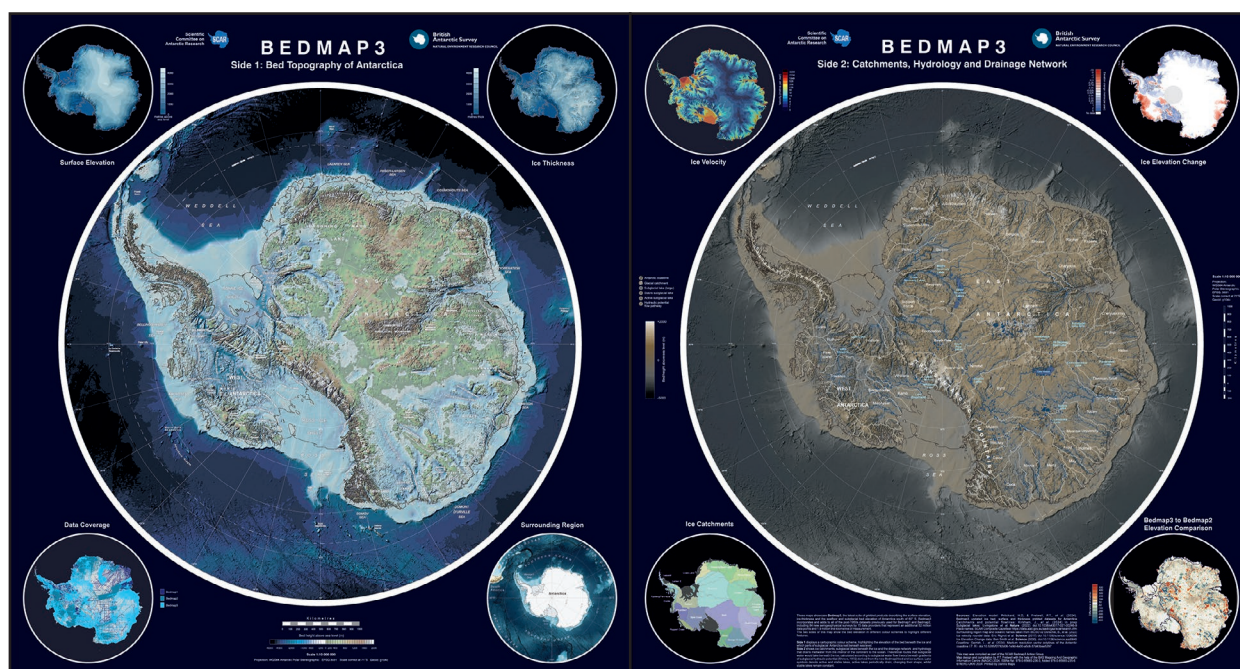
1:10 000 000, 2024

This geophysical and glaciological map shows the surface of the bed beneath the Antarctic Ice Sheet. The surface elevation was created using data from a variety of sources, including many substantial surveys completed since the original Bedmap compilation (Bedmap 1) in 2001. In particular, the Bedmap2 ice thickness grid is made from 25 million measurements, over two orders of magnitude more than were used in Bedmap 1. In most parts of Antarctica the subglacial landscape is visible in much greater detail than was previously available and the improved data coverage has in many areas revealed the full scale of mountain ranges, valleys, basins and troughs, only fragments of which were previously indicated in local surveys.

The map shows the elevation data with key place names and the coastline and grounding line indicated. The map also includes cross-sectional profiles through East and West Antarctica and separate panels showing the geographical distribution of primary survey data and reliability of the bed surface. On the reverse side is an oblique view of the continent with information and statistics given regarding key areas of interest.

**BAS Thematic Map Series Sheet 3: Bedmap 3 – Bed Topography of Antarctica**

|             |                              |
|-------------|------------------------------|
| Size        | 89 x 84 cm                   |
| Size folded | 22.5 x 13.5 cm               |
| Format      | Double-sided, flat or folded |
| ISBN folded | 978-0-85665-235-6            |
| ISBN flat   | 978-0-85665-236-3            |
| RRP         | £11.99                       |



Above: BAS Thematic Map Series Sheet 3: Bedmap 3 – Bedrock Topography of Antarctica (both sides).

## Thematic maps

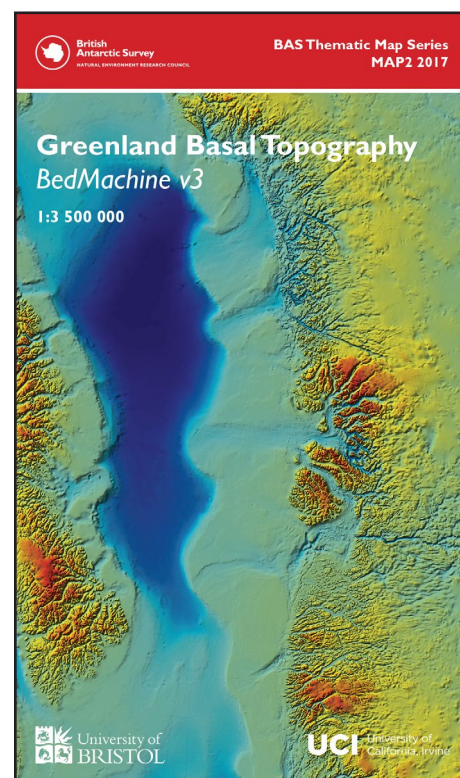
### BAS Thematic Map Series Sheet 2: Greenland Basal Topography

1:3 500 000, 2017

This double-sided geophysical and glaciological map shows the basal topography of Greenland and surrounding seabed. The topography of the subglacial landscape under the Greenland Ice sheet was modelled using a mixture of radio echo-sounding and a glaciological model (BEDMACHINE 2) and is presented in a similar colour scheme to the Antarctic BEDMAP2. The map is a result of a collaboration between BAS and Bristol University, based on recently released data from a joint project between Bristol University and the University of Irvine California. Side 1 shows a detailed map, in plan view, and includes important names, coastline and the zero metre contour. Side 2 presents a 3D view of the dataset, highlighting some of the important and interesting features and gives further details of how the surface was constructed.

#### BAS Thematic Map Series Sheet 2: Greenland Basal Topography

|             |                              |
|-------------|------------------------------|
| Size        | 89 x 75 cm                   |
| Size folded | 22.5 x 13.5 cm               |
| Format      | Double-sided, folded or flat |
| ISBN folded | 978-0-85665-215-8            |
| ISBN flat   | 978-0-85665-216-5            |
| RRP         | £11.99                       |



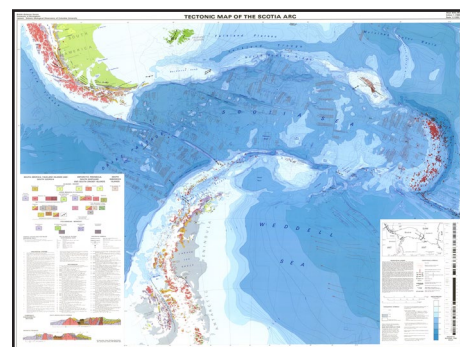
### BAS (Misc) 3: Tectonic map of the Scotia Arc

1:3 000 000, 1985

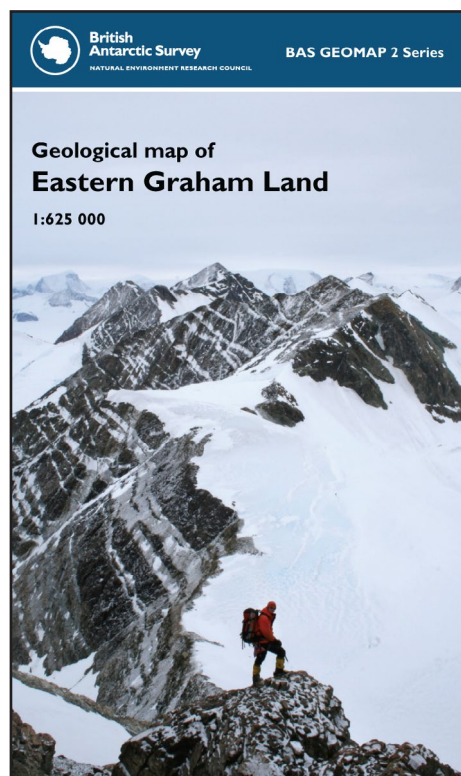
This full-colour map illustrates the tectonic history of the Scotia arc, between southern South America, South Georgia and the Antarctic Peninsula. It summarizes the land geology of the Scotia arc, its marine geology and its geophysics; layer tinting dramatically displays the bathymetry of the Scotia Sea.

#### BAS (Misc) 3: Tectonic map of the Scotia Arc

|        |                    |
|--------|--------------------|
| Size   | 121 x 92 cm        |
| Format | Single-sided, flat |
| ISBN   | 978-0-85665-177-9  |
| RRP    | £9.99              |





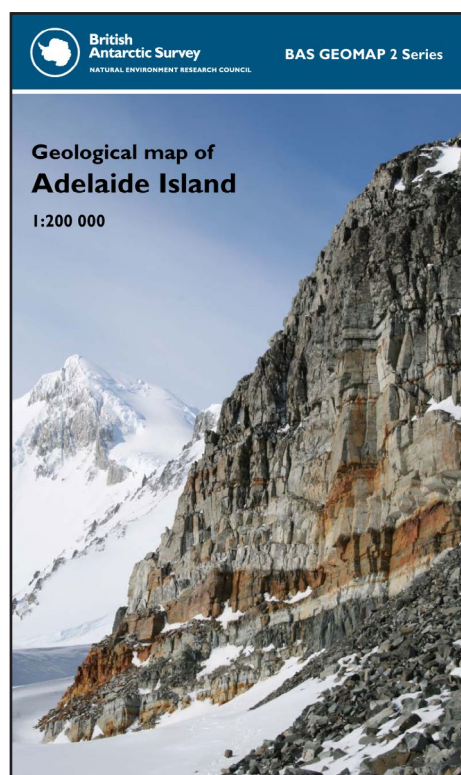


**Sheet 1: Geological map of Eastern Graham Land**

1:625 000, 2011

This sheet provides the first interpretative geological map of the eastern coast of northern Graham Land and is a collation of geological fieldwork, airborne and satellite observations from the 1950s to the present day. The geology of eastern Graham Land has strong affinities to that of Patagonia and there was probably considerable overlap between the northern Antarctic Peninsula and western Patagonia from the Late Palaeozoic up until Miocene separation.

| <b>Sheet 1: Geological map of Eastern Graham Land</b> |                                 |
|-------------------------------------------------------|---------------------------------|
| Size                                                  | 112.5 x 89 cm (supplied folded) |
| Size folded                                           | 22.5 x 13.5 cm                  |
| Format                                                | Single-sided, folded            |
| ISBN                                                  | 978-0-85665-202-8               |
| RRP                                                   | £11.99                          |



**Sheet 2: Geological map of Adelaide Island**

1:200 000, 2011

This sheet provides a fully revised, interpretative geological map of Adelaide Island combining recent field observations with survey work from 1960s to 1990s. The revised geology of Adelaide Island includes five volcanic/sedimentary formations alongside a suite of granitoids and gabbros. Correlations between Adelaide Island and Alexander Island establish the extent of the fore-arc basin of the Antarctic Peninsula.

| <b>Sheet 2: Geological map of Adelaide Island</b> |                              |
|---------------------------------------------------|------------------------------|
| Size                                              | 89 x 75 cm (supplied folded) |
| Size folded                                       | 22.5 x 13.5 cm               |
| Format                                            | Single-sided, folded         |
| ISBN                                              | 978-0-85665-201-1            |
| RRP                                               | £11.99                       |

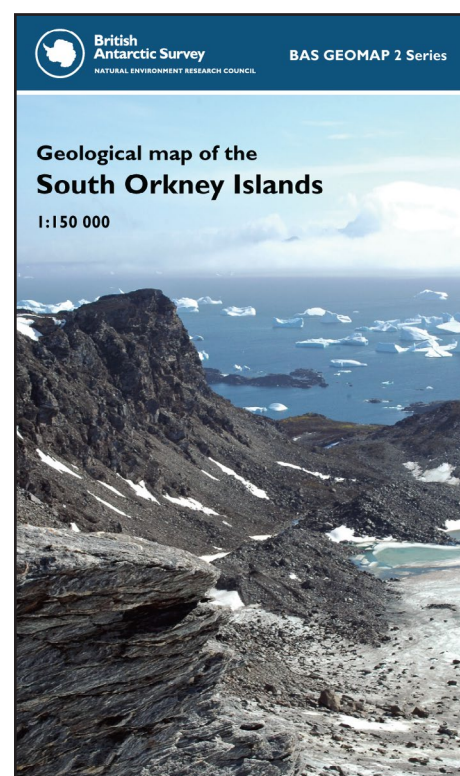
Thematic maps

**Sheet 3: Geological map of the South Orkney Islands**

1:150 000, 2011

This sheet provides an updated geological map of the South Orkney Islands incorporating recent geological observations with survey work from the 1960s to the 1980s. The South Orkney microcontinent, originally contiguous with the northern tip of the Antarctic Peninsula, was separated as a result of the formation of the Powell Basin during the separation of Antarctica from South America and the opening of the Drake Passage.

| Sheet 3: Geological map of the South Orkney Islands |                                 |
|-----------------------------------------------------|---------------------------------|
| Size                                                | 100 x 66.5 cm (supplied folded) |
| Size folded                                         | 22.5 x 13.5 cm                  |
| Format                                              | Single-sided, folded            |
| ISBN                                                | 978-0-85665-200-4               |
| RRP                                                 | £11.99                          |

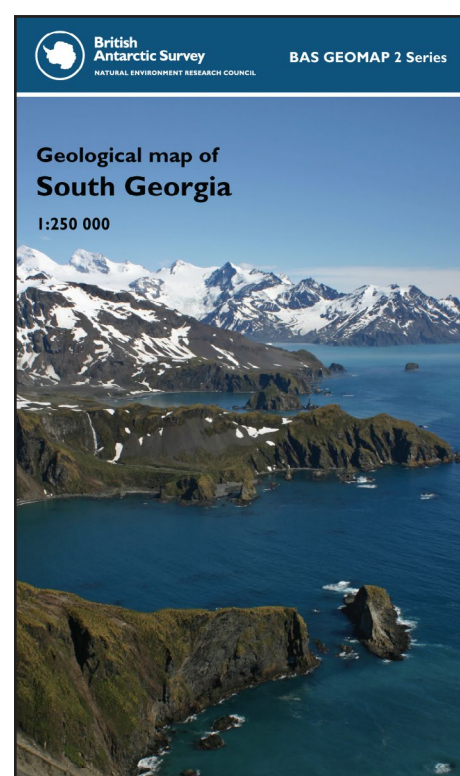


**Sheet 4: Geological map of South Georgia**

1:250 000, 2011

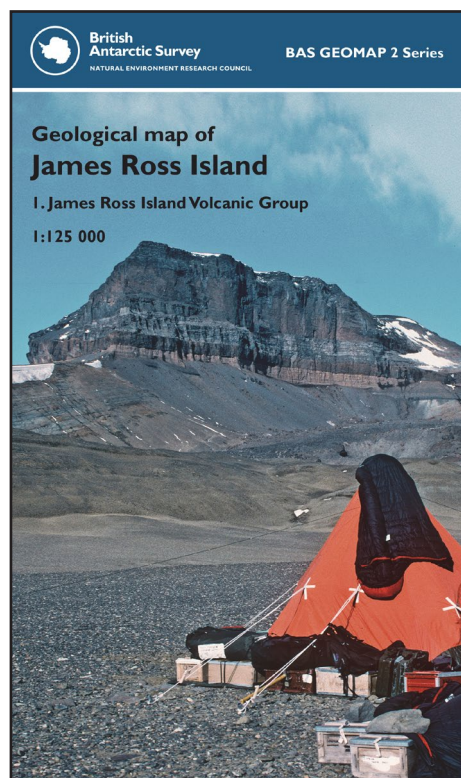
This sheet provides an updated geological map of South Georgia incorporating recent geological field observations with pre-existing mapping. South Georgia forms part of a microcontinental block situated along North Scotia Ridge, in turn part of the Scotia arc, a complex, submarine ridge linking southernmost South America to the Antarctic Peninsula via the South Sandwich, South Orkney and South Shetland Islands.

| Sheet 4: Geological map of South Georgia |                                 |
|------------------------------------------|---------------------------------|
| Size                                     | 100 x 66.5 cm (supplied folded) |
| Size folded                              | 22.5 x 13.5 cm                  |
| Format                                   | Single-sided, folded            |
| ISBN                                     | 978-0-85665-203-5               |
| RRP                                      | £11.99                          |





Thematic maps

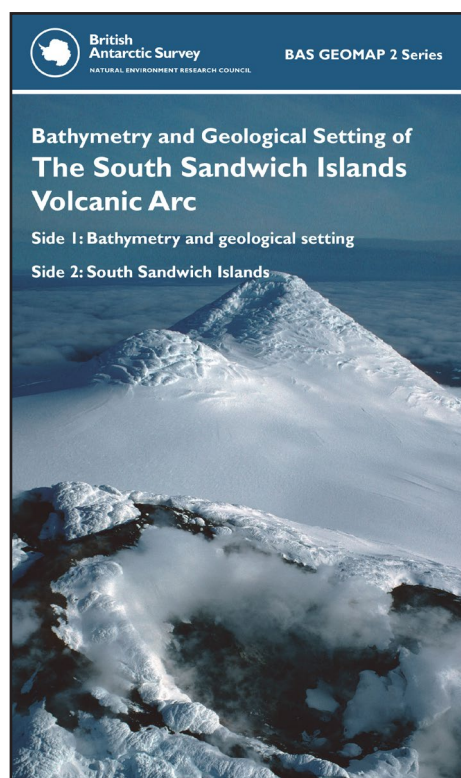


**Sheet 5: Geological map of James Ross Island**

1:125 000, 2013

This sheet provides an updated geology of the Miocene to Holocene James Ross Island Volcanic Group (JRIVG). The JRIVG is the largest Neogene volcanic field in the Antarctic Peninsula region and extends over 7000 km<sup>2</sup>. It comprises a major shield volcano (Mt Haddington) and numerous monogenetic flank and satellite volcanoes. Eruptions were mainly of two types: lava-fed deltas and tuff cones. The commonest are lava-fed deltas, a type of volcanic formation resembling a sedimentary delta but formed entirely of volcanic rocks. The tuff cones are piles of yellowish pyroclastic rocks (lapilli tuffs) hundreds of metres high that formed during violent explosions mainly in the sea during ice-poor interglacial periods although it is unlikely that James Ross Island was ever completely ice free during the past 6 m.y.

| Sheet 5: Geological map of James Ross Island |                                 |
|----------------------------------------------|---------------------------------|
| Size                                         | 112.5 x 89 cm (supplied folded) |
| Size folded                                  | 22.4 x 13.5 cm                  |
| Format                                       | Single-sided, folded            |
| ISBN                                         | 978-0-85665-204-2               |
| RRP                                          | £11.99                          |



**Sheet 6: Bathymetry and Geological Setting of the South Sandwich Islands**

1:750 000, 2014

This sheet of the bathymetry and geological setting of the South Sandwich Islands and the associated East Scotia Ridge back-arc spreading centre consists of two sides: side 1, a regional overview of the volcanic arc, trench and back-arc, and side 2, detailed maps of the individual islands. Side 1 displays the bathymetry at scale 1:750 000 of the intra-oceanic, largely submarine South Sandwich arc, the back-arc system and other tectonic boundaries of the subduction system. Satellite images of the islands on side 2 are at scales of 1:50 000 and 1:25 000 with contours and main volcanological features indicated. These maps are the first detailed topological and bathymetric maps of the area. The islands are entirely volcanic in origin, and most have been volcanically or fumarolically active in historic times. Many of the islands are ice-covered, and the map forms a baseline for future glaciological changes caused by volcanic activities and climate change. The back-arc spreading centre consists of nine segments, most of which have rift-like morphologies.

| Sheet 6: Bathymetry and Geological Setting of the South Sandwich Islands |                                 |
|--------------------------------------------------------------------------|---------------------------------|
| Size                                                                     | 112.5 x 89 cm (supplied folded) |
| Size folded                                                              | 22.4 x 13.5 cm                  |
| Format                                                                   | Double-sided, folded            |
| ISBN                                                                     | 978-0-85665-190-8               |
| RRP                                                                      | £11.99                          |

Thematic maps

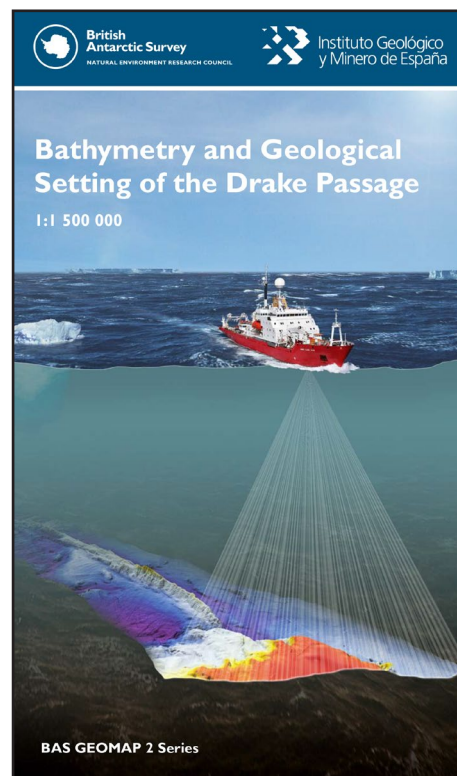
**Sheet 7: Bathymetry and Geological Setting of the Drake Passage**

1:500 000, 2016

This map of the geology and bathymetry of the Drake Passage represents an international collaborative effort coordinated by the Spanish Geological Survey (IGME) and the British Antarctic Survey (BAS), working together with the Korea Polar Research Institute (KOPRI), the Alfred Wegener Institute (AWI) and the United States Antarctic Program (USAP). The Drake Passage is an oceanic gateway of approximately 850 km width located between South America and the Antarctic Peninsula that connects the southeastern Pacific and the southwestern Atlantic oceans and influences mantle flow, oceanographic water mass exchanges and migrations of biota.

**Sheet 7: Bathymetry and Geological Setting of the Drake Passage**

|             |                                 |
|-------------|---------------------------------|
| Size        | 112.5 x 89 cm (supplied folded) |
| Size folded | 22.4 x 13.5 cm                  |
| Format      | Single-sided, folded            |
| ISBN        | 978-0-85665-199-1               |
| RRP         | £11.99                          |





**BAS GEOMAP Series**

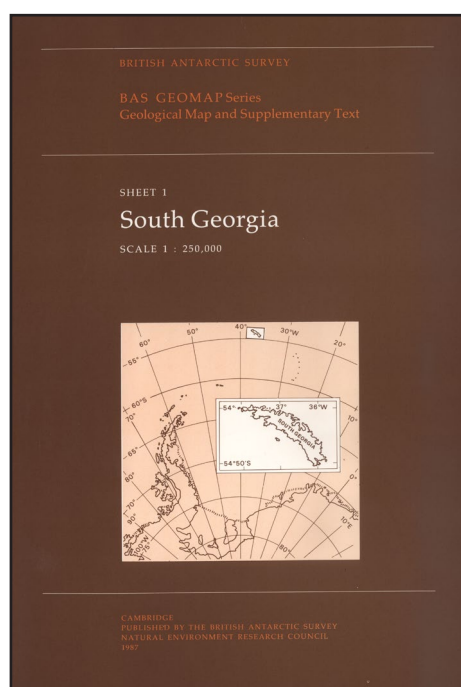
Geological and geomorphological maps and supplementary text – various scales

The BAS GEOMAP Series includes full-colour maps on a geoscientific theme, mostly at scales of 1:250 000. Each map is folded and supplied in a plastic wallet, accompanied by an illustrated explanatory booklet (A4 format).

**Sheet 1: Geological map of South Georgia**

1:250 000, 1987

A map summarizing geological investigations on the island since 1882 (mostly between 1969 and 1977). A partial two-colour system is used to differentiate between geology observed at the outcrop and inferred geology under ice and snow; 63 pp. booklet.



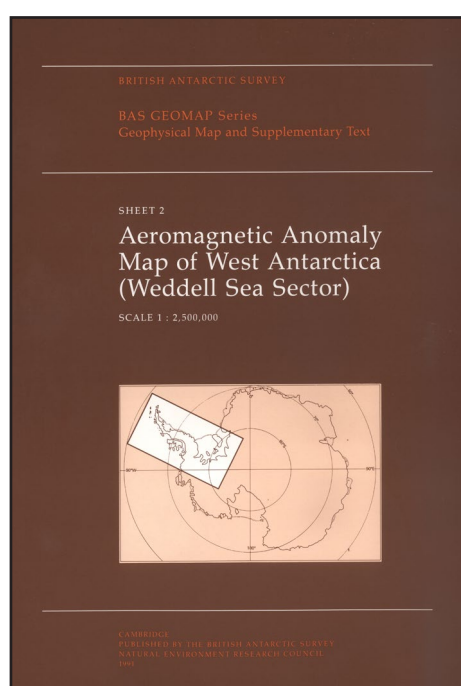
**Sheet 1: Geological map of South Georgia**

|             |                               |
|-------------|-------------------------------|
| Size        | 114 x 93 cm (supplied folded) |
| Size folded | 29.7 x 21 cm (A4)             |
| Format      | Folded map and book           |
| ISBN        | 978-0-85665-171-7             |
| RRP         | £24.99                        |

**Sheet 2: Aeromagnetic anomaly map of West Antarctica (Weddell Sea sector)**

1:2 500 000, 1991

A multi-coloured, contoured aeromagnetic map of part of West Antarctica; a flight-line network superimposed on the map indicates reliability of interpretation; 37 pp. booklet.



**Sheet 2: Aeromagnetic anomaly map of West Antarctica (Weddell Sea sector)**

|             |                               |
|-------------|-------------------------------|
| Size        | 107 x 64 cm (supplied folded) |
| Size folded | 29.7 x 21 cm (A4)             |
| Format      | Folded map and book           |
| ISBN        | 978-0-85665-172-4             |
| RRP         | £19.99                        |

Thematic maps

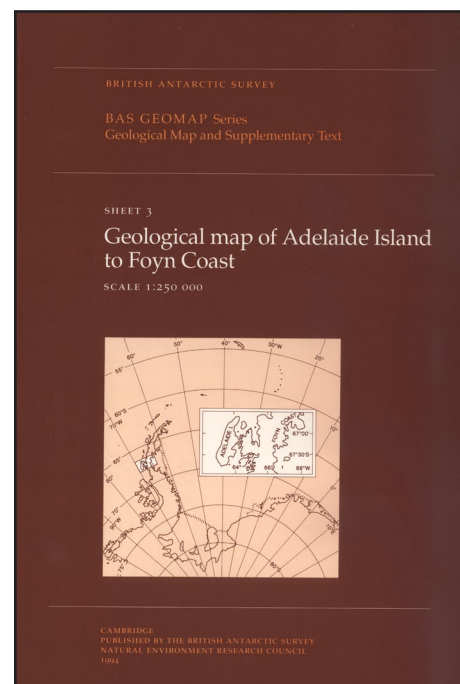
**Sheet 3: Geological map of Adelaide Island to Foyu Coast**

1:250 000, 1994

This map illustrates a geological transect across the Antarctic Peninsula magmatic arc. It uses a partial two-colour system to differentiate between geology observed at the outcrop and inferred geology under ice and snow; 60 pp. booklet.

**Sheet 3: Geological map of Adelaide Island to Foyu Coast**

|             |                               |
|-------------|-------------------------------|
| Size        | 125 x 95 cm (supplied folded) |
| Size folded | 29.7 x 21 cm (A4)             |
| Format      | Folded map and book           |
| ISBN        | 978-0-85665-173-1             |
| RRP         | £19.99                        |



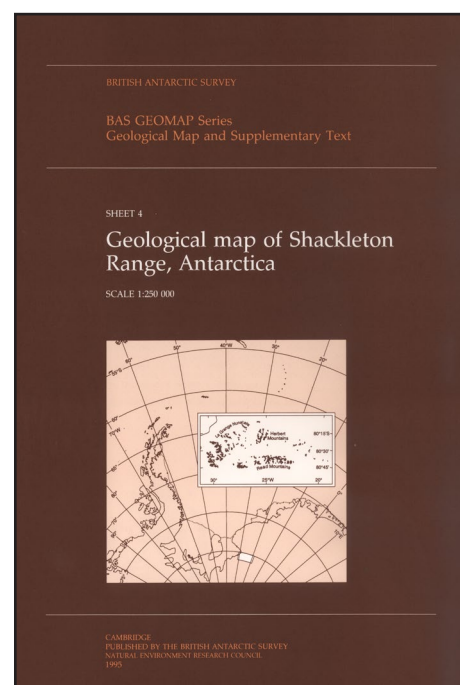
**Sheet 4: Geological map of Shackleton Range, Antarctica**

1:250 000, 1995

A sheet map which synthesizes the results of numerous geological research programmes between 1967 and 1989. A two-tier colour system is used: darker tones identify geological outcrops and paler tones the inferred rock extent beneath the ice; 79 pp. booklet.

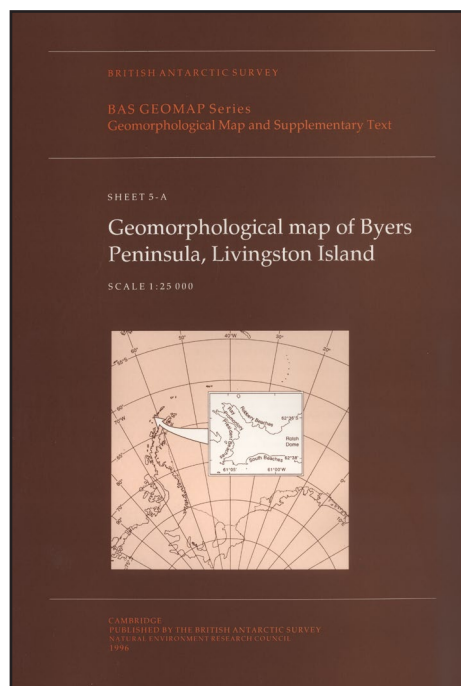
**Sheet 4: Geological map of Shackleton Range, Antarctica**

|             |                               |
|-------------|-------------------------------|
| Size        | 116 x 74 cm (supplied folded) |
| Size folded | 29.7 x 21 cm (A4)             |
| Format      | Folded map and book           |
| ISBN        | 978-0-85665-174-8             |
| RRP         | £19.99                        |





Thematic maps

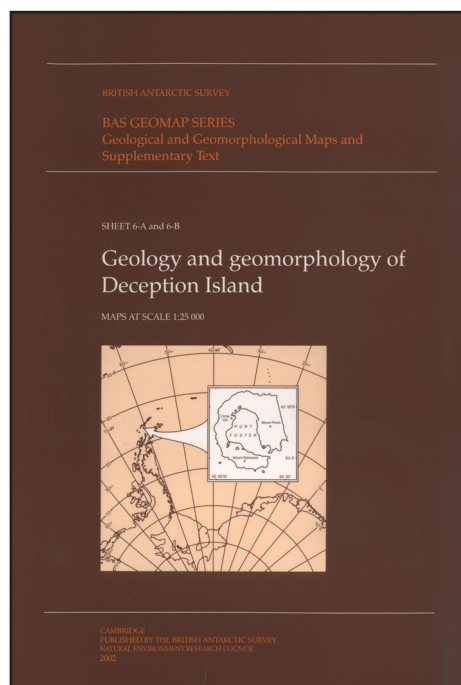


**Sheet 5A: Geomorphological map of Byers Peninsula, Livingston Island**

1:25 000, 1996

A topographic and a geomorphological map of Byers Peninsula, the largest ice-free area in the South Shetland Islands, are both included with this publication. The geomorphological map uses eight colours to depict morphogenetic features, with morphochronological information superimposed; 65 pp. booklet. Produced in conjunction with Programa Español de Investigación en la Antártida.

| Sheet 5A: Geomorphological map of Byers Peninsula, Livingston Island |                                 |
|----------------------------------------------------------------------|---------------------------------|
| Size                                                                 | 103 x 81.5 cm (supplied folded) |
| Size folded                                                          | 29.7 x 21 cm (A4)               |
| Format                                                               | Folded map and book             |
| ISBN                                                                 | 978-0-85665-175-5               |
| RRP                                                                  | £19.99                          |



**Sheet 6A and 6B: Geology and geomorphology of Deception Island**

1:25 000, 2002

Topographic, geomorphological and geological maps of Deception Island, an active and unique volcanic caldera in the South Shetland Islands, just off the northern tip of the Antarctic Peninsula. With the three maps comes an in depth, 77 page booklet explaining the maps and including additional information on this enigmatic island.

The geological and geomorphological maps have been produced in collaboration with the University of Madrid. The topographic map has been produced by the Servicio Geográfico del Ejército. All maps are in Spanish and English.

| Sheet 6A and 6B: Geology and geomorphology of Deception Island |                              |
|----------------------------------------------------------------|------------------------------|
| Size                                                           | 85 x 75 cm (supplied folded) |
| Size folded                                                    | 29.7 x 21 cm (A4)            |
| Format                                                         | Folded map and book          |
| ISBN                                                           | 978-0-85665-176-2            |
| RRP                                                            | £24.99                       |

## Thematic maps

### BAS (Misc) I: Geomorphology of St Andrews Bay – Royal Bay, South Georgia

1:50 000, 1981

A folded, coloured and contoured map resulting from detailed geomorphological mapping carried out by a group from Aberdeen University in 1975. Explanatory text on reverse of map.

#### BAS (Misc) I: Geomorphology of St Andrews Bay – Royal Bay, South Georgia

|             |                   |
|-------------|-------------------|
| Size        | 68 x 58 cm        |
| Size folded | 19.5 x 13.5 cm    |
| Format      | Flat or folded    |
| ISBN folded | 978-0-85665-188-5 |
| ISBN flat   | 978-0-85665-188-5 |
| RRP         | £6.99             |



### BAS (Misc): Geomorphology of Stromness – Cumberland Bay, South Georgia

1:50 000, 1970

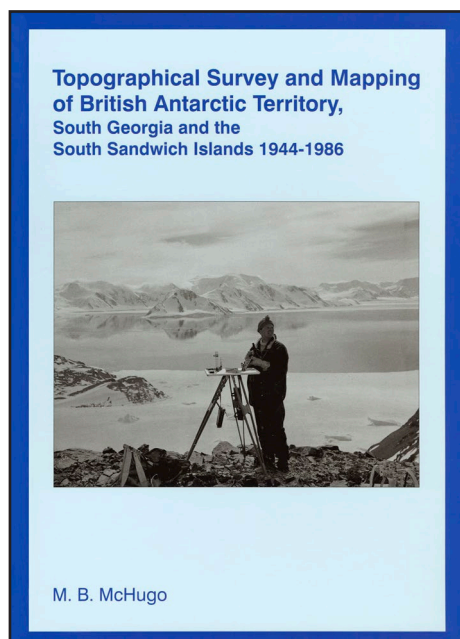
A coloured geomorphological map.

#### Geomorphology of Stromness – Cumberland Bay, South Georgia

|        |                   |
|--------|-------------------|
| Size   | 70 x 62 cm        |
| Format | Flat              |
| ISBN   | 978-0-85665-000-0 |
| RRP    | £6.99             |







**Topographical Survey and Mapping of British Antarctic Territory, South Georgia and South Sandwich Islands 1944-1986**

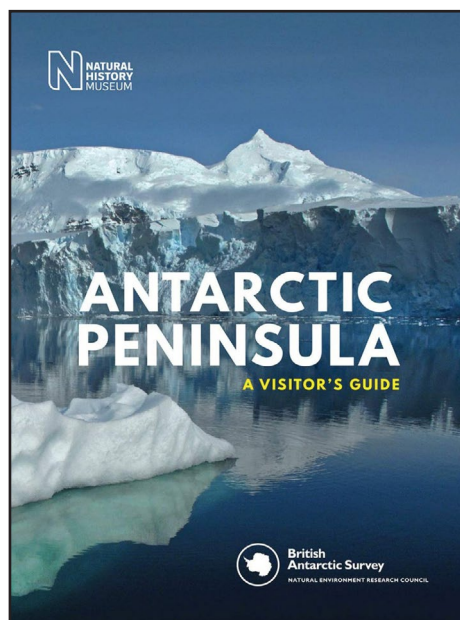
2004

This edition is limited to 250 copies of which 200 are for sale. This book on the history of topographical survey and mapping for BAT/FID 1944-86 gives a detailed account of the progress made by surveyors of that period, working in remote and inhospitable locations in Antarctica, and of the challenges facing the cartographers back in the UK. The 78-page, case-bound book is A4 size and includes 20 photographs, most in colour, and 13 maps. Five of the maps are large format and are contained in a pocket inside the back cover.

M. Barbara McHugo was closely involved with the mapping of BAT and FID for many years at both the Directorate of Overseas Surveys and the Overseas Surveys Division of the Ordnance Survey.

**Topographical Survey and Mapping of British Antarctic Territory, South Georgia and South Sandwich Islands 1944-1986**

|        |              |
|--------|--------------|
| Size   | 30 x 21.5 cm |
| Format | Book         |
| ISBN   | 1-85531-2220 |
| RRP    | £31.99       |



**Antarctic Peninsula: A Visitor's Guide**

2019

This essential guide for Antarctic travellers has been fully revised, with updated maps and charts and a new chapter on climate change.

The guide is divided into eight chapters, each of which covers a separate aspect of the Antarctic Peninsula environment: geography; geology; weather and climate; the ice sheet; sea ice and icebergs; life on land; The Antarctic Treaty; origin of place names. Each chapter is written by an expert in that subject from British Antarctic Survey – one of the world's leading environmental research centres and the most respected scientific authority on the region.

Featuring striking images and clear and detailed maps throughout, *Antarctic Peninsula: A Visitor's Guide* is packed with essential information, including the variations in climate and weather; geographical statistics, current human activity and the location of research stations, the different types of icebergs to be seen and how they form, and much more.

Written and illustrated by British Antarctic Survey. Published by the Natural History Museum.

**Antarctic Peninsula: A Visitor's Guide**

|        |                   |
|--------|-------------------|
| Size   | 23.5 x 17.5 cm    |
| Format | Book              |
| ISBN   | 978-0-56509-465-2 |
| RRP    | £20.00            |

## Contact details

British Antarctic Survey publishes a range of maps, but does not sell them directly to the public. BAS maps are available through a selection of suppliers:

### Stanfords

[www.stanfords.co.uk](http://www.stanfords.co.uk)

### UKAHT

[www.ukaht.org](http://www.ukaht.org)

### NHBS

[www.nhbs.com](http://www.nhbs.com)

### Scott Polar Research Institute

[www.spri.cam.ac.uk](http://www.spri.cam.ac.uk)

### British Geological Survey

[www.bgs.ac.uk](http://www.bgs.ac.uk)

### The Chart & Map Shop, Fremantle

[www.chartandmapshop.com.au](http://www.chartandmapshop.com.au)

### The Map Shop, Upton-Upon-Severn

[www.themapshop.co.uk](http://www.themapshop.co.uk)

### freytag & berndt, Vienna

[www.freytagberndt.com/en](http://www.freytagberndt.com/en)

### Sheltema/Pied à Terre, Amsterdam

[www.scheltema.nl](http://www.scheltema.nl)

### World of Maps, Ottawa

[www.worldofmaps.com](http://www.worldofmaps.com)

### Wholesale orders

BAS can supply wholesale orders direct at a discount.

Contact: [mapsales@bas.ac.uk](mailto:mapsales@bas.ac.uk)

### Archives Service

For enquiries about printed maps produced in the past by BAS or its predecessor organisations contact the BAS Archives Service:

Tel: +44 (0) 1223 221400 Email: [basarchives@bas.ac.uk](mailto:basarchives@bas.ac.uk)

[bas.ac.uk/archives](http://bas.ac.uk/archives)

### Feedback and further information

We welcome your feedback and comments. These should be addressed to:

**Head of Mapping and Geographic Information Centre**

British Antarctic Survey, High Cross, Madingley Road, Cambridge, CB3 0ET, UK

Email: [magic@bas.ac.uk](mailto:magic@bas.ac.uk)



# Catalogue summary

## Topographic Maps

| Map series                 | Title                                                                              | Flat (cm)      | Folded (cm) | Format                          | ISBN folded       | ISBN flat         | RRP     |
|----------------------------|------------------------------------------------------------------------------------|----------------|-------------|---------------------------------|-------------------|-------------------|---------|
| BAS (Misc)<br>15A and 15B  | Antarctica and the Arctic                                                          | 89 x 84        | 22.5 x 13.5 | Double-sided,<br>flat or folded | 978-0-85665-230-1 | 978-0-85665-231-8 | £11.99  |
| BAS (Misc)<br>14A and 14B  | South Shetland Islands                                                             | 89 x 87.5      | 21 x 13     | Double-sided,<br>flat or folded | 978-0-85665-223-3 | 978-0-85665-224-0 | £11.99  |
| BAS (Misc)<br>16A and 16B  | Greenland and the European<br>Arctic                                               | 100 x 89       | 22.5 x 13.5 | Double-sided,<br>flat or folded | 978-0-85665-221-9 | 978-0-85665-222-6 | £11.99  |
| BAS Topo 2A<br>and 2B      | Antarctic Peninsula and<br>Weddell Sea / Graham Land<br>and South Shetland Islands | 110 x 84       | 22.5 x 13.5 | Double-sided,<br>flat or folded | 978-0-85665-232-5 | 978-0-85665-233-2 | £11.99  |
| BAS Topo 6A<br>and 6B      | South Orkney Islands and<br>Signy Island                                           | 89 x 75        | 22.5 x 13.5 | Double-sided,<br>flat or folded | 978-0-85665-237-0 | 978-0-85665-238-7 | £11.99  |
| BAS 250P<br>Series         | SQ 19-20/14 Adelaide Island<br>and Arrowsmith Peninsula                            | 88 x 84        | 22.5 x 13.5 | Double-sided,<br>flat or folded | 978-0-85665-195-3 | 978-0-85665-198-4 | £11.99  |
| BAS 250 Series             | SP 21-22/13: Trinity Peninsula                                                     | 69.5 x 69      | -           | Flat                            | -                 | 978-0-85665-179-3 | £6.99   |
| BAS 250 Series             | SP 21-22/14: Joinville Island                                                      | 76 x 69        | -           | Flat                            | -                 | 978-0-85665-180-9 | £6.99   |
| BAS 250 Series             | SQ 19-20/4: Graham Land                                                            | 81 x 68.5      | -           | Flat                            | -                 | 978-0-85665-181-6 | £6.99   |
| BAS 250 Series             | SQ 21-22/1: James Ross<br>Island                                                   | 79 x 71        | -           | Flat                            | -                 | 978-0-85665-182-3 | £6.99   |
| BAS 250 Series             | SR 19-20/16: Palmer Land                                                           | 71 x 52.5      | -           | Flat                            | -                 | 978-0-85665-183-0 | £6.99   |
| BAS 250 Series             | SR 19-20/12: Palmer Land                                                           | 71 x 52.5      | -           | Flat                            | -                 | 978-0-85665-184-7 | £6.99   |
| BAS 100 Series             | Sheet 1: South Orkney<br>Islands, East Sheet                                       | 64 x 56.5      | -           | Flat                            | -                 | 978-0-85665-187-8 | £3.99   |
| BAS 100 Series             | Sheet 2: James Ross Island                                                         | 113.5 x<br>105 | 28.5 x 20   | Folded                          | 978-0-85665-186-1 | -                 | £6.99   |
| BAS (Misc)<br>12A and 12B  | South Georgia and The<br>Shackleton Crossing                                       | 100 x 89       | 22.5 x 13.5 | Double-sided,<br>flat or folded | 978-0-85665-228-8 | 978-0-85665-229-5 | £11.99  |
| BAS 25 Series<br>4A and 4B | Thatcher Peninsula, South<br>Georgia                                               | 65 x 58        | 21.7 x 14.5 | Double-sided,<br>flat or folded | 978-0-85665-149-6 | 978-0-85665-217-2 | £9.99   |
| BAS 25 Series<br>5A and 5B | Busen Region, South Georgia                                                        | 88 x 69        | 23 x 14.5   | Double-sided,<br>flat or folded | 978-0-85665-169-4 | 978-0-85665-218-9 | £9.99   |
| BAS (UKAHT)<br>Sheet 1     | Graham Land and the South<br>Shetland Islands / Scotia Sea                         | 90 x 84        | 22.5 x 13.5 | Double-sided,<br>flat or folded | 978-1-85665-210-3 | 978-1-85665-211-0 | £11.99* |
| BAS (UKAHT)<br>Sheet 2     | Brabant Island to Argentine<br>Islands                                             | 88 x 84        | 22.5 x 13.5 | Double-sided,<br>flat or folded | 978-1-8665-194-6  | 978-1-8665-197-7  | £11.99* |
| BAS (UKAHT)<br>Sheet 3     | Northern Antarctic<br>Peninsula                                                    | 88 x 84        | 22.5 x 13.5 | Double-sided,<br>flat or folded | 978-0-85665-212-7 | 978-0-85665-213-4 | £11.99* |
| BAS (UKAHT)<br>Sheet 3     | Northern Antarctic<br>Peninsula                                                    | 88 x 84        | 22.5 x 13.5 | Double-sided,<br>flat or folded | 978-0-85665-212-7 | 978-0-85665-213-4 | £11.99* |

\*Order from UKAHT only (see page 28)

## Thematic Maps

| Map series                            | Title                                      | Flat (cm) | Folded (cm) | Format                          | ISBN folded       | ISBN flat         | RRP    |
|---------------------------------------|--------------------------------------------|-----------|-------------|---------------------------------|-------------------|-------------------|--------|
| BAS Thematic<br>Map Series<br>Sheet 3 | Bedmap 3 – Bed Topography<br>of Antarctica | 89 x 84   | 22.5 x 13.5 | Double-sided,<br>flat or folded | 978-0-85665-235-6 | 978-0-85665-236-3 | £11.99 |
| BAS Thematic<br>Map Series<br>Sheet 2 | Greenland basal topography                 | 89 x 75   | 22.5 x 13.5 | Double-sided,<br>flat or folded | 978-0-85665-215-8 | 978-0-85665-216-5 | £11.99 |
| BAS (Misc) 3                          | Tectonic map of the Scotia<br>Arc          | 121 x 92  | -           | Single-sided,<br>flat           | -                 | 978-0-85665-177-9 | £9.99  |

continued ▷

## Catalogue summary continued

| Map series          | Title                                                                     | Flat (cm)  | Folded (cm)    | Format               | ISBN folded       | ISBN flat         | RRP    |
|---------------------|---------------------------------------------------------------------------|------------|----------------|----------------------|-------------------|-------------------|--------|
| BAS Geomap 2 Series | Sheet 1: Geological map of Eastern Graham Land                            | 112.5 x 89 | 22.5 x 13.5    | Single-sided, folded | 978-0-85665-202-8 | -                 | £11.99 |
| BAS Geomap 2 Series | Sheet 2: Geological map of Adelaide Island                                | 89 x 75    | 22.5 x 13.5    | Single-sided, folded | 978-0-85665-201-1 | -                 | £11.99 |
| BAS Geomap 2 Series | Sheet 3: Geological map of the South Orkney Islands                       | 100 x 66.5 | 22.5 x 13.5    | Single-sided, folded | 978-0-85665-200-4 | -                 | £11.99 |
| BAS Geomap 2 Series | Sheet 4: Geological map of South Georgia                                  | 100 x 66.5 | 22.5 x 13.5    | Single-sided, folded | 978-0-85665-203-5 | -                 | £11.99 |
| BAS Geomap 2 Series | Sheet 5: Geological map of James Ross Island                              | 112.5 x 89 | 22.4 x 13.5    | Single-sided, folded | 978-0-85665-204-2 | -                 | £11.99 |
| BAS Geomap 2 Series | Sheet 6: Bathymetry and geological setting of the South Sandwich Islands  | 112.5 x 89 | 22.4 x 13.5    | Double-sided, folded | 978-0-85665-203-5 | -                 | £11.99 |
| BAS Geomap 2 Series | Sheet 7: Bathymetry and geological setting of the Drake Passage           | 112.5 x 89 | 22.4 x 13.5    | Single-sided, folded | 978-0-85665-199-1 | -                 | £11.99 |
| BAS Geomap Series   | Sheet 1: Geological map of South Georgia                                  | 114 x 93   | 29.7 x 21 (A4) | Folded map and book  | 978-0-85665-171-7 | -                 | £24.99 |
| BAS Geomap Series   | Sheet 2: Aeromagnetic anomaly map of West Antarctica (Weddell Sea sector) | 107 x 64   | 29.7 x 21 (A4) | Folded map and book  | 978-0-85665-172-4 | -                 | £19.99 |
| BAS Geomap Series   | Sheet 3: Geological map of Adelaide Island to Foyen Coast                 | 124 x 95   | 29.7 x 21 (A4) | Folded map and book  | 978-0-85665-173-1 | -                 | £19.99 |
| BAS Geomap Series   | Sheet 4: Geological map of Shackleton Range, Antarctica                   | 116 x 74   | 29.7 x 21 (A4) | Folded map and book  | 978-0-85665-174-8 | -                 | £19.99 |
| BAS Geomap Series   | Sheet 5A: Geomorphological map of Byers Peninsula, Livingston Island      | 103 x 81.5 | 29.7 x 21 (A4) | Folded map and book  | 978-0-85665-175-5 | -                 | £19.99 |
| BAS Geomap Series   | Sheet 6A and 6B: Geology and geomorphology of Deception Island            | 85 x 75    | 29.7 x 21 (A4) | Folded map and book  | 978-0-85665-176-2 | -                 | £24.99 |
| BAS (Misc) I        | Geomorphology of St Andrews Bay – Royal Bay, South Georgia                | 68 x 58    | 19.5 x 13.5    | Flat or folded       | 978-0-85665-188-5 | 978-0-85665-188-5 | £6.99  |
| BAS (Misc)          | Geomorphology of Stromness – Cumberland Bay, South Georgia                | 70 x 62    | -              | Flat                 | -                 | 978-0-85665-000-0 | £6.99  |

### Books

| Title                                                                                                               | Dimensions (cm) | Format                 | ISBN              | RRP    |
|---------------------------------------------------------------------------------------------------------------------|-----------------|------------------------|-------------------|--------|
| Topographical Survey and Mapping of British Antarctic Territory, South Georgia and South Sandwich Islands 1944-1986 | 30 x 21.5       | Book (hard-back cover) | 1-85531-2220      | £31.99 |
| Antarctic Peninsula: A Visitor's Guide                                                                              | 23.5 x 17.5     | Book                   | 978-0-56509-465-2 | £20.00 |





The British Antarctic Survey strives to uncover the secrets of the Polar Regions and the frozen regions of the Earth. Our expertise spans the depths of the oceans to the inner edge of space.

Our research highlights the fragility of the Earth's frozen environments, and what that means for our planet. We have been living and working in the extremes of Antarctica and the Arctic for over 60 years. Our scientists discovered the hole in the ozone layer and identified key evidence for climate change in ancient ice – our science continues to inform decision-makers.

We provide the UK's national polar capability by operating research stations, aircraft and Royal Research Ship Sir David Attenborough, supporting science at the poles and securing the UK's presence in Antarctic affairs.

The British Antarctic Survey is part of the Natural Environment Research Council (NERC). NERC is part of UK Research and Innovation.

bas.ac.uk



**British Antarctic Survey**

NATURAL ENVIRONMENT RESEARCH COUNCIL



**Natural Environment Research Council**